

Kern Community College District has been in the top 5 statewide for the percentage amount of its reserve for the past 8 years
 KCCD highlighted in yellow. Community college districts with more than 10,000 FTES highlighted in green.

	2011-12	2012-13	2013-14	2014-15	2015-16	2016-17	2017-18	2018-19	2019-20	2020-21
#1	SAN BERNARDINO	SAN BERNARDINO	BARSTOW	LASSEN	WEST VALLEY	WEST VALLEY	WEST VALLEY	PALO VERDE	KERN	FEATHER RIVER
#2	RANCHO SANTIAGO	SANTA BARBARA	SANTA BARBARA	WEST VALLEY	KERN	KERN	KERN	VENTURA	FEATHER RIVER	KERN
#3	VICTOR VALLEY	FOOTHILL-DEANZA	FEATHER RIVER	SANTA BARBARA	FEATHER RIVER	LASSEN	FEATHER RIVER	WEST VALLEY	WEST HILLS	MT. SAN JACINTO
#4	SANTA BARBARA	FEATHER RIVER	KERN	KERN	VENTURA	BUTTE	VENTURA	FEATHER RIVER	MT. SAN JACINTO	WEST HILLS
#5	NORTH ORANGE	LASSEN	LASSEN	FOOTHILL-DEANZA	LASSEN	BARSTOW	NORTH ORANGE	KERN	WEST VALLEY	WEST KERN

Data =

California Community Colleges Summary of Unrestricted General Fund Transactions

Table III.2 of the CCFS-311 Reports at

<https://misweb.cccco.edu/fiscalportal/reports.aspx>

Net Ending Balance / Expenditures (last column in the Table III.2)

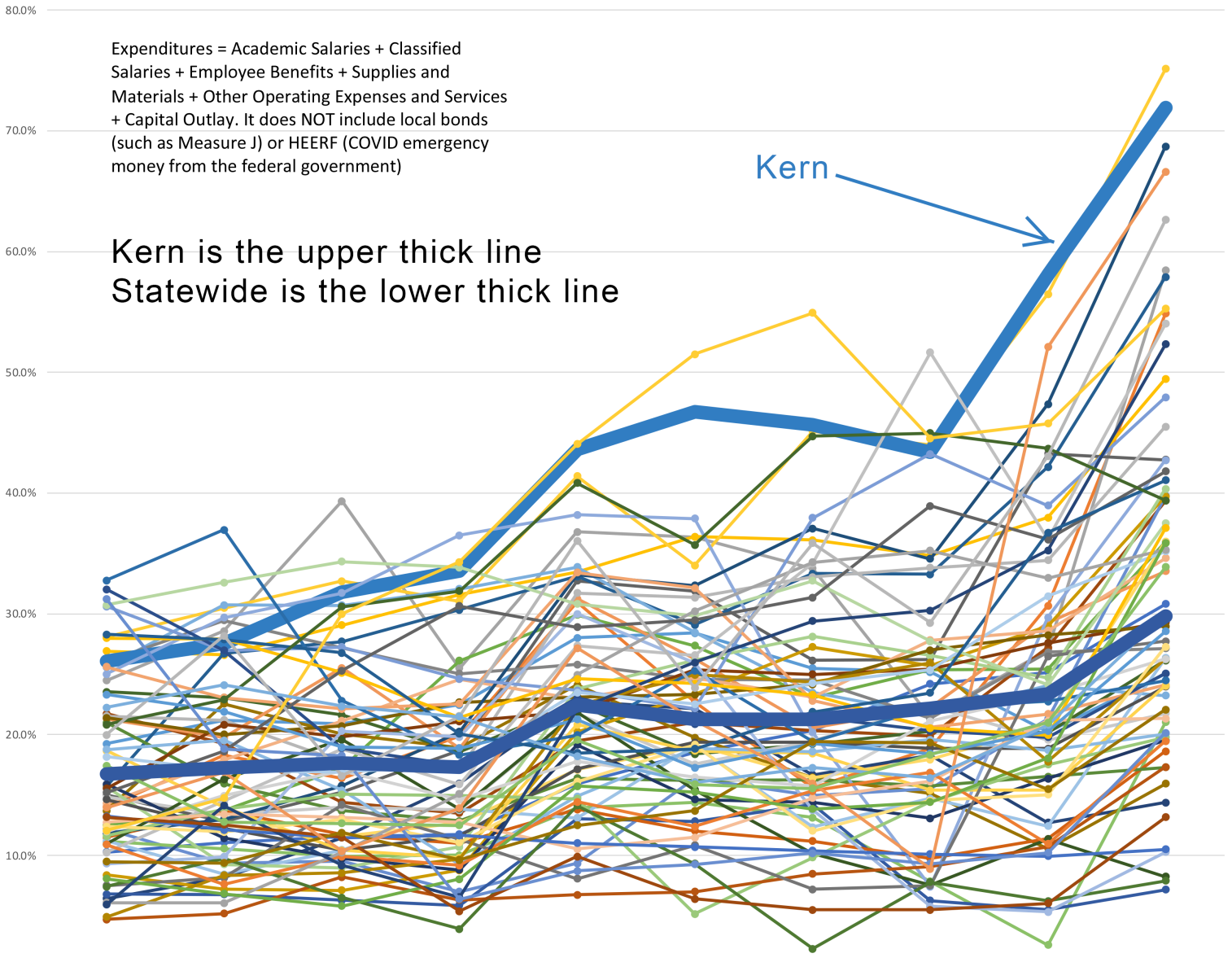
FTES data from https://datamart.cccco.edu/Students/FTES_Summary.aspx

Net Ending Balance/Expenditures

Expenditures = Academic Salaries + Classified Salaries + Employee Benefits + Supplies and Materials + Other Operating Expenses and Services + Capital Outlay. It does NOT include local bonds (such as Measure J) or HEERF (COVID emergency money from the federal government)

Kern is the upper thick line
Statewide is the lower thick line

Kern



2011-12 2012-13 2013-14 2014-15 2015-16 2016-17 2017-18 2018-19 2019-20 2020-21

- | | | | | | |
|--------------------|--------------------|--------------------|-----------------|-----------------|----------------|
| ALLAN HANCOCK | ANTELOPE VALLEY | BARSTOW | BUTTE | CABRILLO | CERRITOS |
| CHABOT-LAS POSITAS | CHAFFEY | CITRUS | COAST | COMPTON | CONTRA COSTA |
| COPPER MOUNTAIN | DESERT | EL CAMINO | FEATHER RIVER | FOOTHILL-DEANZA | GAVILAN JOINT |
| GLENDALE | GROSSMONT-CUYAMACA | HARTNELL | IMPERIAL | KERN | LAKE TAHOE |
| LASSEN | LONG BEACH | LOS ANGELES | LOS RIOS | MARIN | MENDOCINO-LAKE |
| MERCED | MIRACOSTA | MONTEREY | MT. SAN ANTONIO | MT. SAN JACINTO | NAPA |
| NORTH ORANGE | OHLONE | PALO VERDE | PALOMAR | PASADENA | PERALTA |
| RANCHO SANTIAGO | REDWOODS | RIO HONDO | RIVERSIDE | SAN BERNARDINO | SAN DIEGO |
| SAN FRANCISCO | SAN JOAQUIN DELTA | SAN JOSE-EVERGREEN | SAN LUIS OBISPO | SAN MATEO | SANTA BARBARA |
| SANTA CLARITA | SANTA MONICA | SEQUOIAS | SHASTA-TEH-TRI | SIERRA | SISKIYOU |
| SOLANO | SONOMA | SOUTH ORANGE | SOUTHWESTERN | STATE CENTER | VENTURA |
| VICTOR VALLEY | WEST HILLS | WEST KERN | WEST VALLEY | YOSEMITE | YUBA |
| Statewide | | | | | |