

A photograph of a modern, multi-story building with a prominent red 'BCE' logo on its facade. The building features a mix of white, grey, and brick panels, along with a large, covered outdoor area. The sky is blue with scattered clouds, and palm trees are visible on the left and right sides of the frame.

**Summer/Fall 2021
Preliminary Plans
Panorama Campus
February 10, 2021**

A Shared Responsibility Model



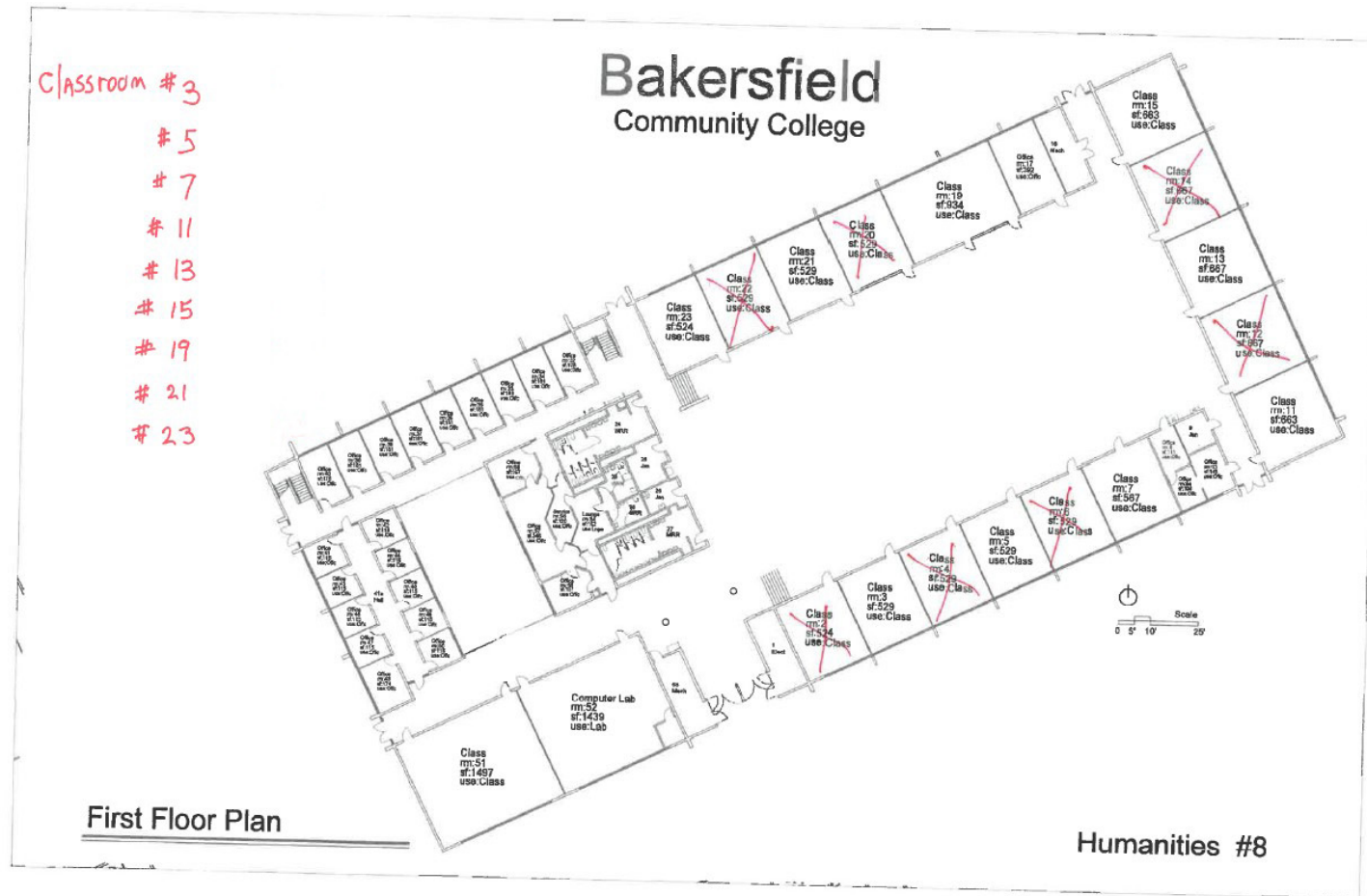
- Face coverings will be required on campus
- Check in via KCCD Campus Pass
- Social distancing markers will be installed across the campus
- M&O Staff will have a sanitization schedule
- Students and faculty sanitize personal space before and after each class
- Include expectations in syllabi
- Tech Support Services will accommodate each class space for simultaneous Zoom/in-person learning

Socially Distanced Planning



- Strategically choose buildings to reopen (Humanities & MS)
- Limit seating based on square footage of the classroom
- Conduct instruction via in-person and camera

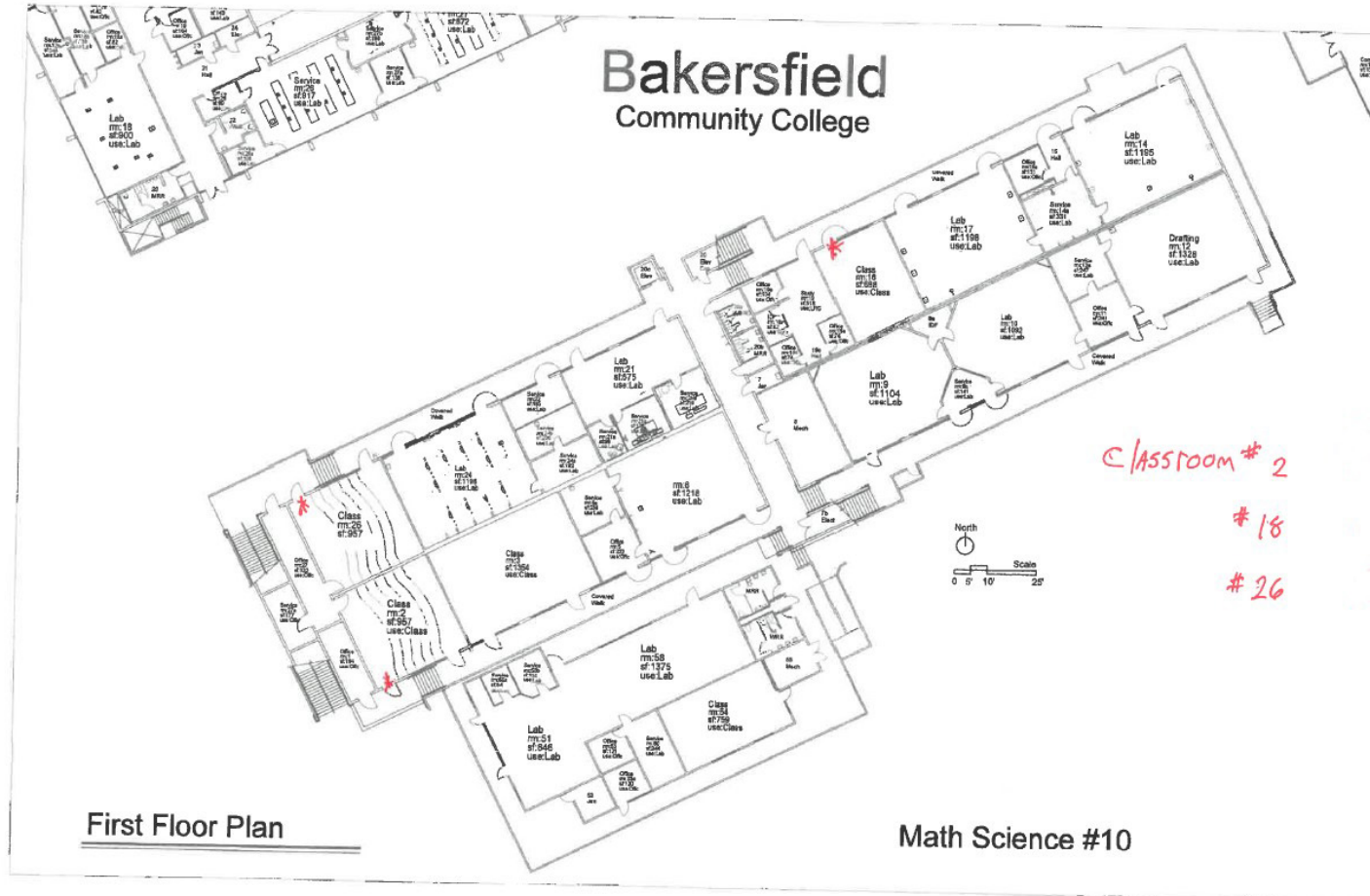
Floor Plan: Humanities



Humanities



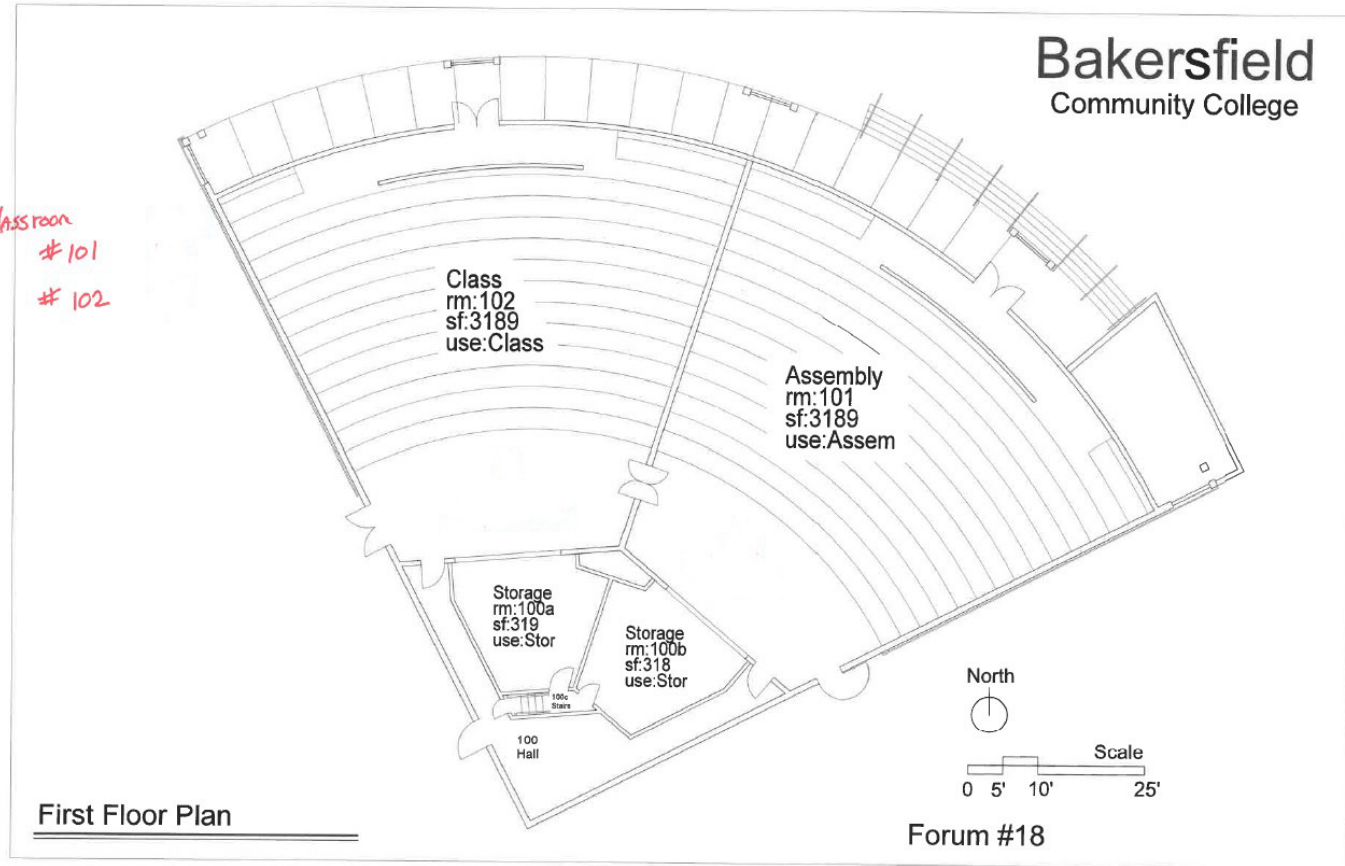
Floor Plan: MS First Floor



MS Building



Floor Plan: Forums



Student Services and Other Spaces

Plans are being developed for the following:

- Student Services is planning on a full return to campus this summer.
- Setting up non-classroom/lab areas for a safe return to campus.
- Looking into social distancing markers for the campus.
- Opening plan for the library commons.
- Plans for bringing back food services in the new Dining Commons.

Any Questions?