

President's Report to College Council

Sonya Christian. September 6, 2018

Fall 2018 Enrollment:

The September 4, 2018 enrollment update (census week) from Institutional Research shows:

Enrollment at BC for Fall 2018 is 4.7% higher than the same time last fall; which is a 329.5 FTES growth this fall over last fall.

Enrollment districtwide for Fall 2018 is 5.8% higher than the same time last fall which is a 564.5 FTES growth this fall over last fall.

Bakersfield College	Point-in-Time Comparison ¹			
	Fall - Census Week (Full Term)			
	Fall 2017	Fall 2018	Diff	% Chg
Current Headcount	20,606	21,810	1,204	5.8%
Duplicated Enrollments	57,005	62,419	5,414	9.5%
Waitlisted Enrollments ²	227	908	681	300.0%
Current FTES ³	7,016.0	7,345.6	329.5	4.7%
Workload (FTEF)	465.8	512.5	46.7	10.0%
FTES/FTEF ⁴	14.2	14.3	0.1	0.9%
Active Sections	2,045	2,358	313	15.3%

Kern Community College District	Point-in-Time Comparison ¹			
	Fall - Census Week (Full Term)			
	Fall 2017	Fall 2018	Diff	% Chg
Current Headcount	29,010	30,376	1,366	4.7%
Duplicated Enrollments	78,870	86,193	7,323	9.3%
Waitlisted Enrollments ²	286	1,111	825	288.5%
Current FTES ³	9,700.0	10,264.5	564.5	5.8%
Workload (FTEF)	659.8	723.9	64.1	9.7%
FTES/FTEF ⁴	14.7	14.2	-0.5	-3.5%
Active Sections	2,957	3,431	474	16.0%

Waitlists at the beginning of the term had over 7000 students.

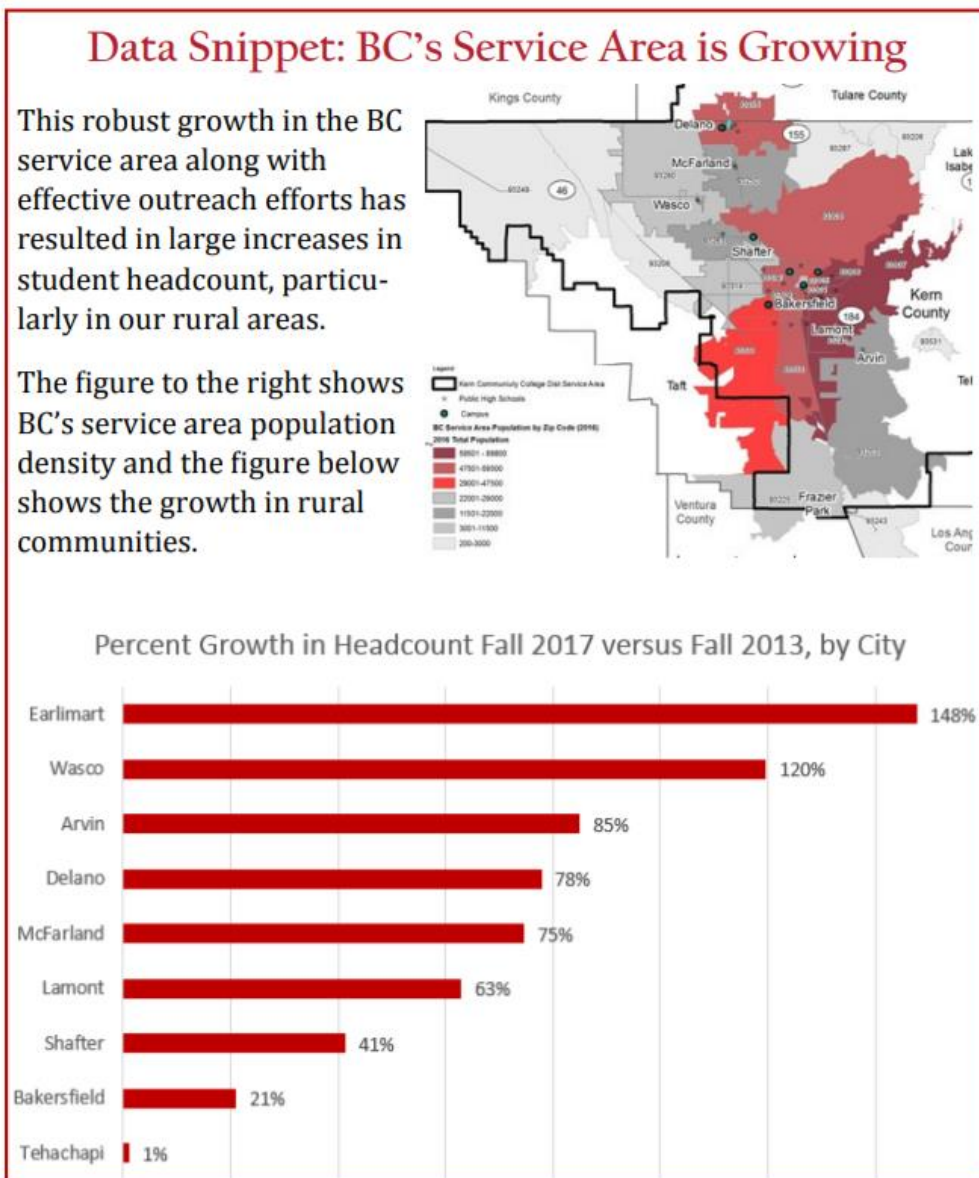
Budget committee work this summer:

Attached is the report from the work the budget committee completed this summer. Members of the group that completed this work in three weeks – Theresa McAllister, Steven Holmes, Nick Strobel, Jessica Wojtysiak, Zav Dadabhoy, Lesley Bonds, Michelle Pena

Attached is BC’s response to the media inquiry on the funding formula. This response was developed by Lesley Bonds, Liz Rozell, Michele Bresso

Board of trustees:

Attached are my reports to the Board of Trustees



This November 4 seats out of the 7 are up for election

Measure J: [A Better BC](#)

Shuttle schedules, parking information, construction updates

Alternative transportation

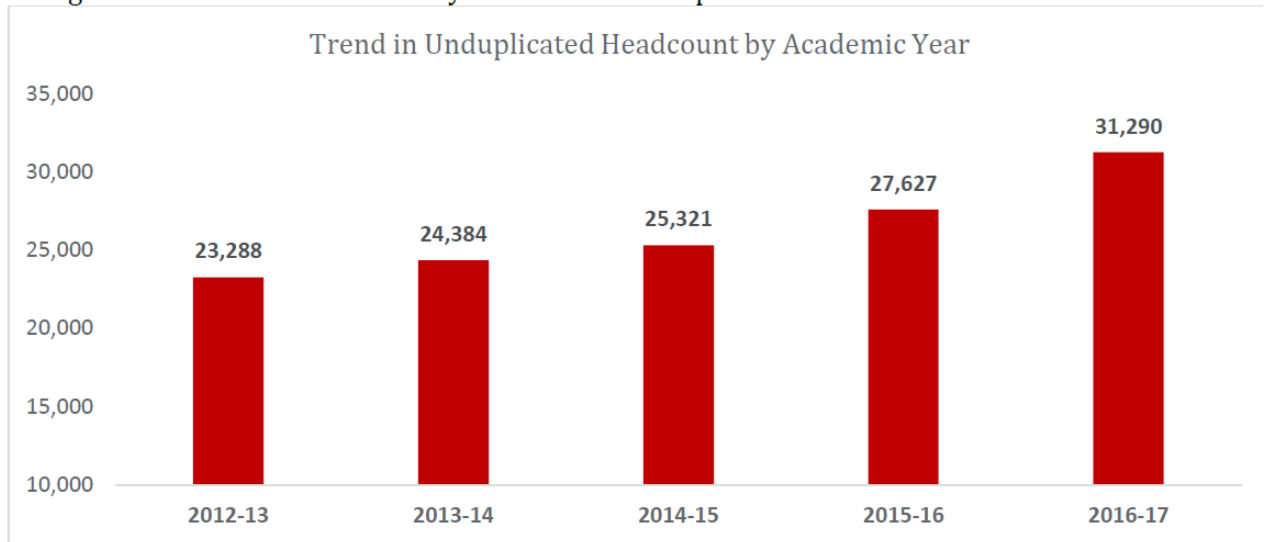
Space utilization – Need to use space sparingly during this construction period.

Accreditation ISER

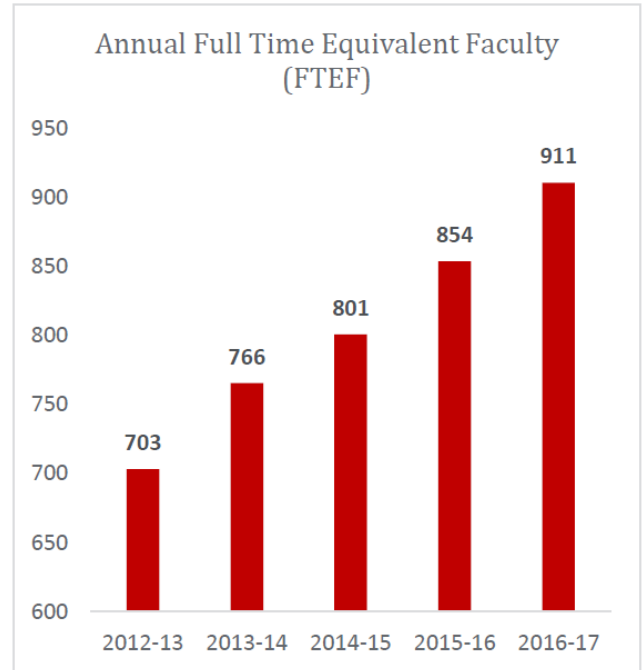
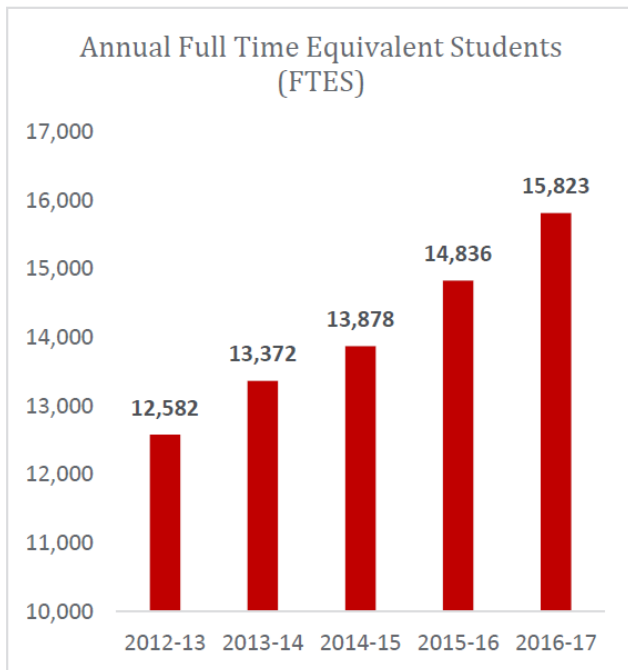
We use the number over 31,000 as the headcount. The number now is over 33,000

Our Students

Bakersfield College (BC) is committed to serving the diverse economic, cultural, and educational backgrounds within our community. BC's annual unduplicated headcount continues to increase.



As BC's annual Full-Time Equivalent Students (FTES) has increased over the past five years, so, too, has the annual Full-Time Equivalent Faculty (FTEF), thanks to large increases in the hiring of contract faculty in the past five years.



Page 9:

Educational Backgrounds

Attainment of a college degree or credential is critical to the economic advancement of individuals across the state and this is certainly true of those in the communities served by Bakersfield College. As shown in the figure below, within Bakersfield's city limits, attainment of a college degree is markedly lower than the average for all of California (29% vs. 38%). However, degree attainment in the surrounding rural areas (Delano, South West, and North West cluster) is even lower (9% vs. 38%), just a fraction of the statewide average. These extremely low levels of education underscore the critical urgency of BC's mission to "provide opportunities for students from diverse economic, cultural, and educational backgrounds to attain Associate and Baccalaureate degrees and certificates". Additionally, the majority of individuals in BC's rural areas have less than a high school education.

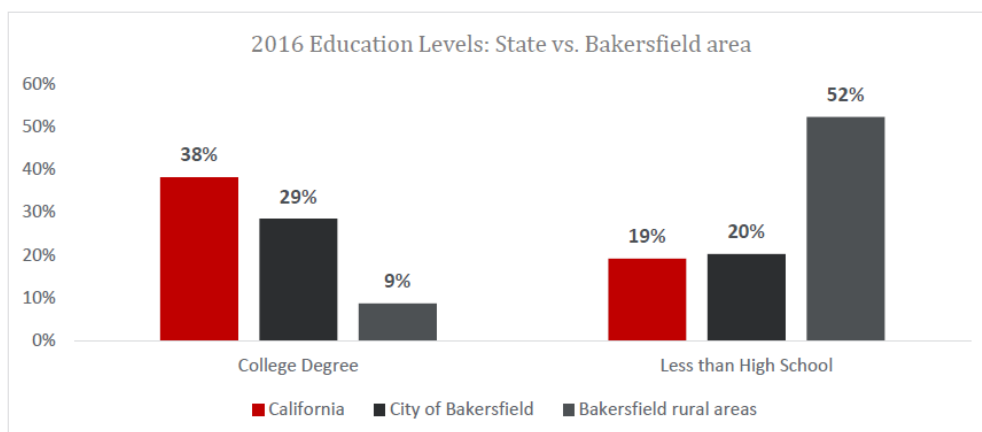
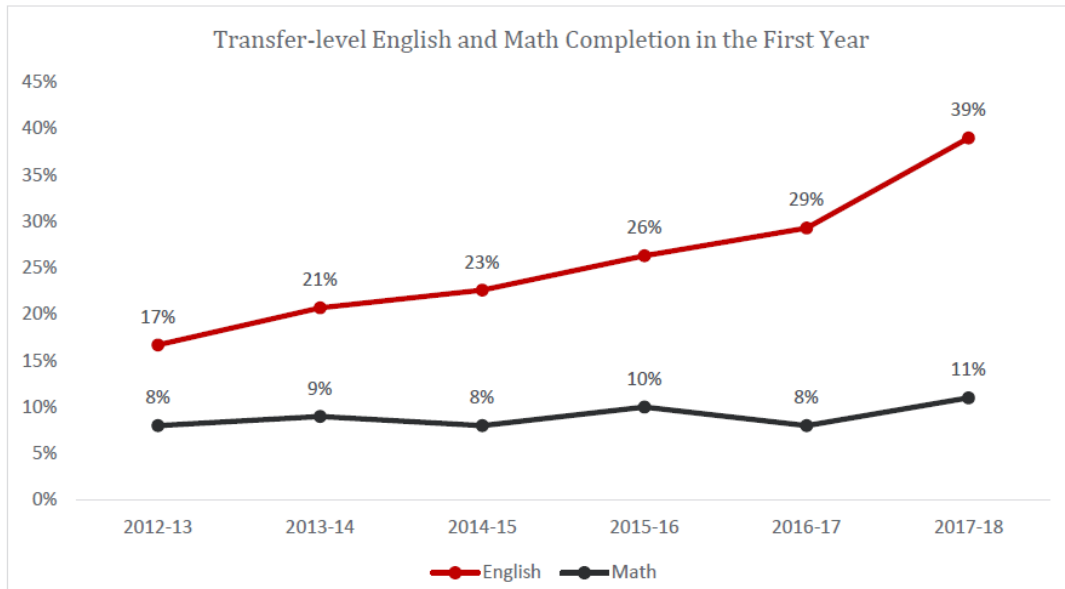


Table 2. Institution-Set Standards and Aspirational Goals

	ISS Metric	Source	2013	2014	2015	2016	2017	Institution-Set Standard	Aspirational Goal
Course Success Rates	Credit Course Success (Fall)	Data Mart	68.8%	69.0%	68.8%	69.0%	70.3%	67%	72%
	Online Course Success (Fall)	Data Mart	53.8%	52.2%	55.6%	59.4%	63.3%	52.5%	67%
	CTE Course Success (Fall)	Data Mart	76.5%	73.7%	75.5%	77.2%	78.1%	73%	77%
	Basic Skills Course Success (Fall)	Data Mart	60.9%	62.1%	55.5%	55.3%	54.4%	55%	60%
Milestones	Transfer English Achievement Yr. 1	Scorecard	20.7%	22.6%	26.3%	29.3%	NA	26%	40%
	Transfer English Achievement Yr. 2	Scorecard	36.8%	40.2%	40.2%	44.6%	NA	44%	60%
	Transfer Math Achievement Yr. 1	Scorecard	7.8%	8.1%	9.6%	7.5%	NA	12%	20%
	Transfer Math Achievement Yr. 2	Scorecard	14.5%	14.8%	15.8%	15.3%	NA	20%	30%
Outcomes	Degree completion	KCCD	1,017	1,026	966	1,236	1,293	875	1400
	Certificate completion	KCCD	273	298	299	384	325	250	400
	Transfer Counts	KCCD	976	975	1,132	1,052	1,193	850	1200
	Skills Builders ¹	Scorecard	NA	17%	19.1%	34.9%	34.3%	14%	TBD
Licensing Pass Rates	NCLEX - RN	Board	98%	91%	91%	93%	91%	85%	95%
	LVN Licensed Vocational Nursing	Board	94%	100%	50%	89%	NA	85%	95%
	CNA	Board	97.6%	90.2%	93.5%	NA	NA	50%	95%
	Radiologic Technology	Board	82%	91%	94%	85%	91%	85%	95%
	Paramedic	Board	92%	100%	94%	92.3%	NA	85%	100%

Employment Rates		2013	2014	2015	Institution-Set Standard	Aspirational Standard	
Job Placement Rates	NCLEX - RN	RN-Web	88%	91%	96%	75%	96%
	LVN Nursing	LVN-Web	70%	89%	95%	75%	96%
	CNA	Perkins/Datamart	62%	68%	81%	60%	80%
	Radiologic Technology	Rad-tech Web	100%	100%	100%	75%	100%
	Paramedic	Web-page	76%	76%	71%	70%	80%
	Accounting	Perkins/ Datamart	53%	71%	80%	60%	80%
	Admin. of Justice	Perkins/ Datamart	74%	71%	86%	60%	90%
	Automotive Technology	Perkins/ Datamart	60%	57%	78%	60%	75%
	Business & Commerce	Perkins/Datamart	43%	61%	75%	60%	80%
	Child Development	Perkins/ Datamart	55%	62%	72%	55%	80%
	Drafting	Perkins/ Datamart	69%	79%	77%	60%	75%
	Electrical	Perkins/ Datamart	100%	100%	n/a	60%	80%
	Electronics/Elec tech	Perkins/ Datamart	n/a	80%	76%	60%	80%
	Emergency Medical Tech	Perkins/ Datamart	68%	84%	82%	60%	80%
	Fire Technology	Perkins/ Datamart	79%	88%	60%	50%	80%
	Human Services	Perkins/ Datamart	59%	68%	73%	50%	75%
	Machine Tool/ Shop	Perkins/ Datamart	71%	61%	89%	60%	85%
	Welding and Cutting	Perkins/ Datamart	83%	82%	71%	60%	70%

Completion of transfer-level math in the first year also increased 38% from 2012-13 to 2017-18, while the rate of improvement has not been as dramatic as with English, innovation in math instruction and placement practices continues unabated and should result in further increases transfer-level math completion in future years.



President's whereabouts:

- June 21, 2018: Keynote speaker at the eLumen Conference
- July 3, 2018: met with ATD leadership in Washington, D.C.
- August 11, 2018: Speaker at the Wonderful Ag Prep Celebration in Delano
- August 23, 2018: Won the Educator of the year Delano Chamber of Commerce Installation Dinner

Traveling College Council:

- College Council will hold meetings this fall at BC Southwest and Delano
- September 21, BC Southwest, Room 201
- November 2, Delano Campus, Room 109

Some dates to calendar:

- September 7 & 8: Wrestling Duals (BC Gym)
- September 8, 5:00pm: President's Reception for New Faculty and Renegade Football vs. El Camino
- September 10: Transfer Day at BC
- September 13: KCCD Board of Trustees Meeting
- September 13: BCSGA Distinguished Speaker, Jim St. Germain
- September 14: DREAM Big Youth Education Conference at BC
- September 14, 5:00pm: Women's Volleyball vs. Palomar
- September 21 & 22: Panorama Creative Music Summit
- October 1-5: Accreditation Visit**