

FACILITY MASTER PLAN

The Process

Bill Potter

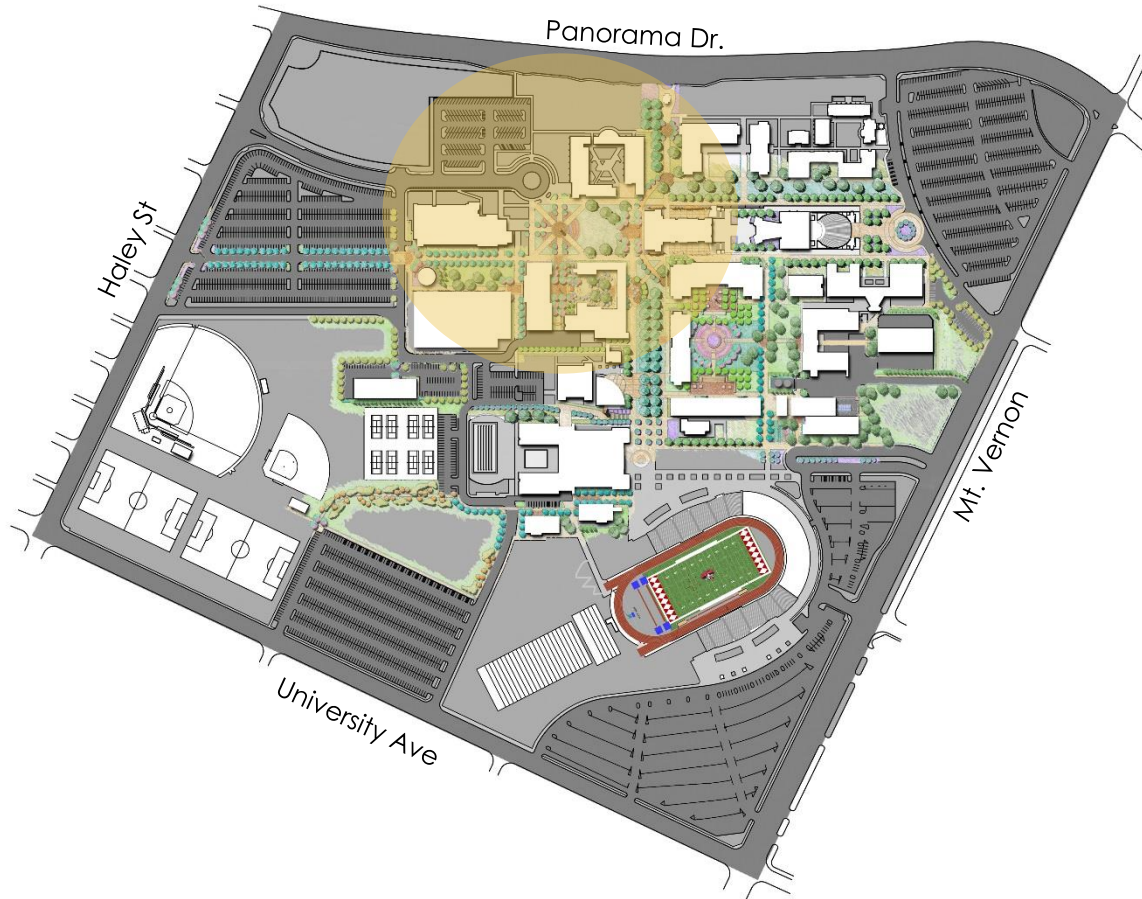
Director of Facilities, Maintenance & Operations, Bakersfield College

October 6, 2017

AECOM
GLOBAL COMPANY WITH OVER
100,000 EMPLOYEES

RESOURCES TO STAFF UP AND
DOWN DEPENDING ON OUR NEEDS

Student Services



Goals

- Consolidate Student Services
- Provide “Front End Services” convenient to parking / edge of campus
- Accommodate growth and re-design for Basic Skills
- Minimize swing space (allows for phasing of Student Services)
- Engage / Enliven Library Quad / Green
- Accommodate ease of public access to Administration, Conferencing, & Culinary Arts
- Create synergies with relocation of Administration:

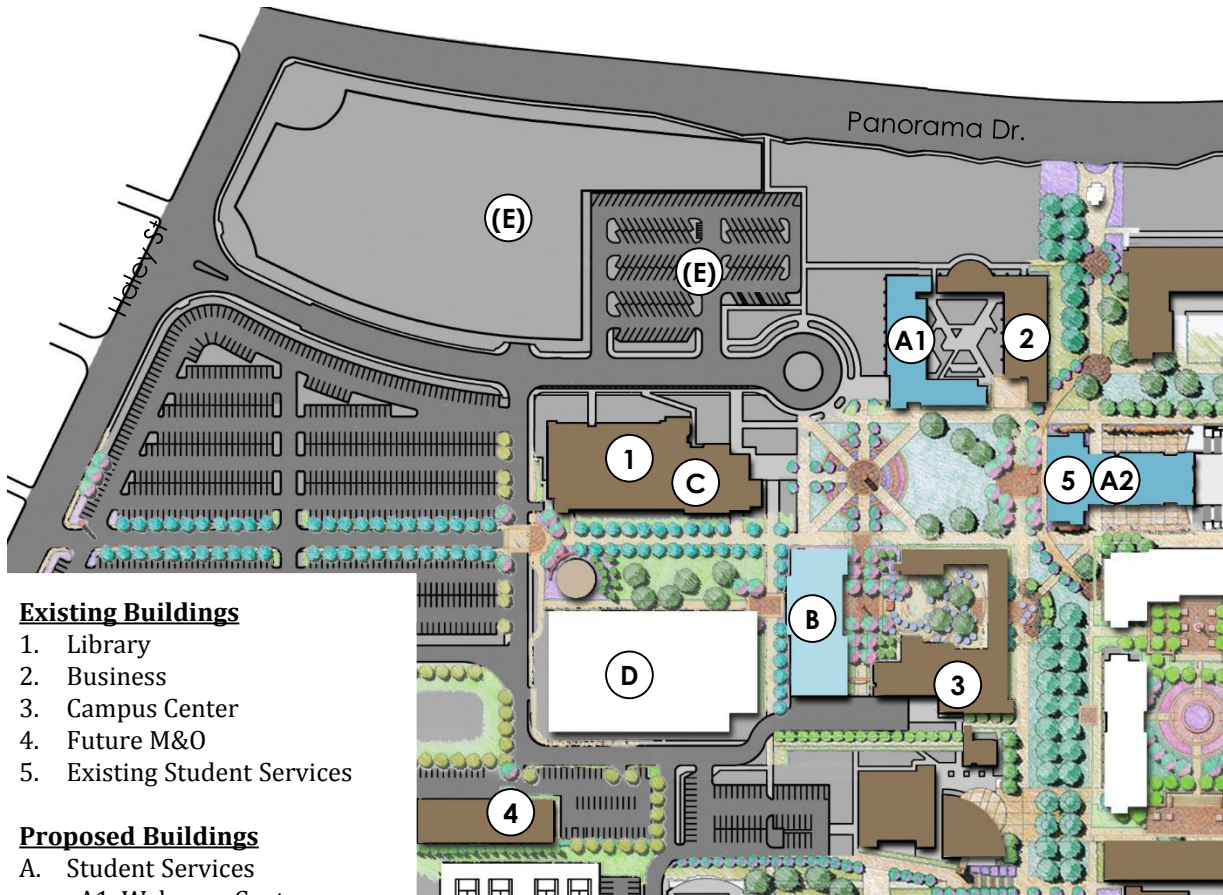
Culinary / Conference

Conference / Campus Center

Conference / Administration

Impacts

- Swing Space Required (Bookstore, Fiscal & Student Support Services)
- Requires relocation of Administration



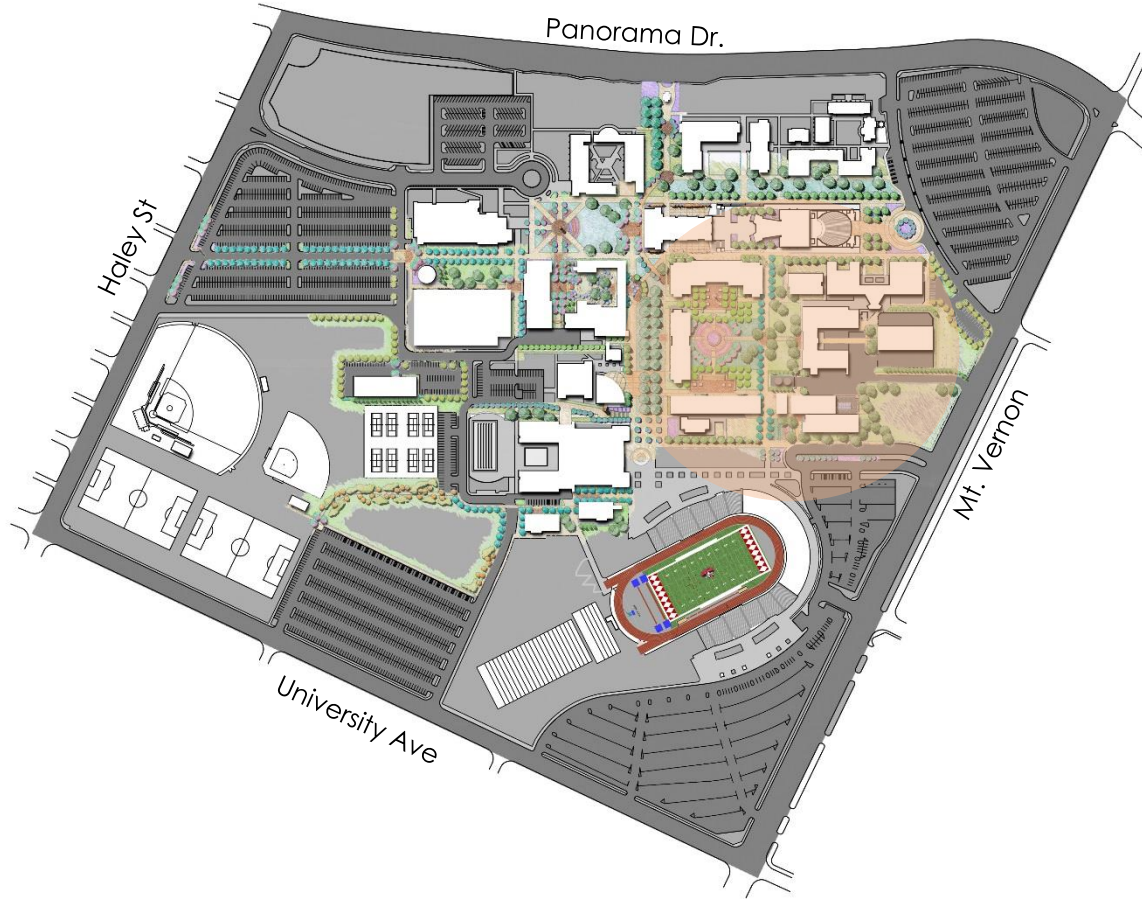
Existing Buildings

1. Library
2. Business
3. Campus Center
4. Future M&O
5. Existing Student Services

Proposed Buildings

- A. Student Services
 - A1 Welcome Center
 - A2 Student Support Services
- B. Bookstore, Culinary Arts, Conferencing, Administration
- C. Archive
- D. Future Building Pad

STEM Neighborhood

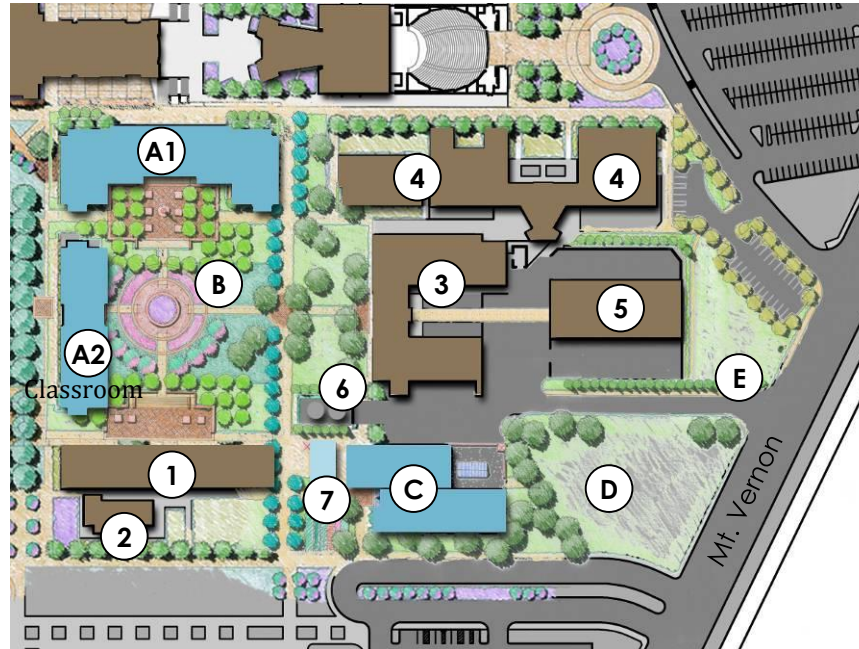


Goals

- Create a Strong STEM Neighborhood
- Minimize Swing Space Required (limited to AG Science)
- Mitigates Building Scale
- Improves Pedestrian access / campus connection (To Industrial & Auto Technologies – Buildings 3 & 5)
- Enhances North / South pedestrian connection between campus & parking
- Mitigates grade issues / accessibility (C)
- Minimizes pedestrian & service movement conflicts
- Significant visual impact on core of campus and Mt. Vernon Entry

Impacts

- Relocation of Stem Center Optional



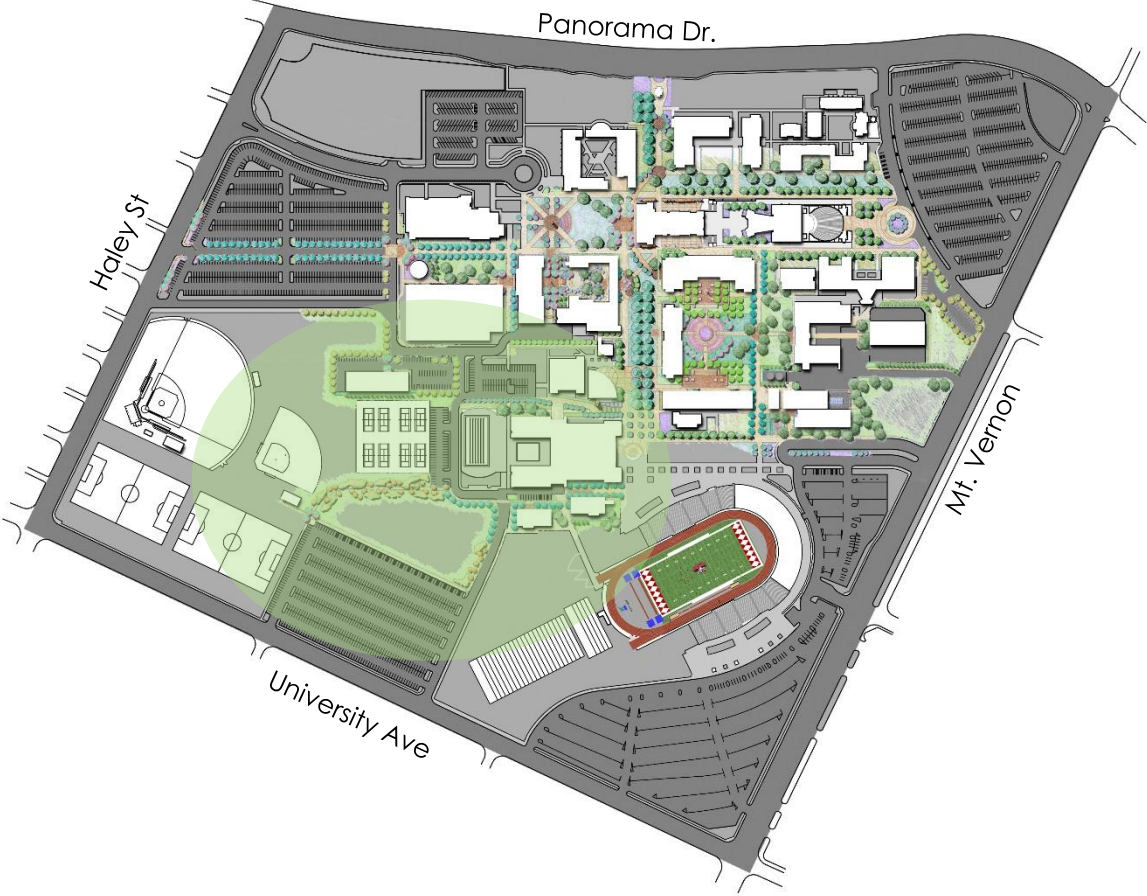
Existing Buildings/Improvements

1. Planetarium/Allied Health/ Building
2. Allied Health
3. Industrial Technology
4. Fine Arts
5. Auto Technology
6. Cooling Tower Yard
7. STEM Center (in progress)

Proposed Buildings

- A. Math / Science / Engineering
 - A1. Science Engineering (Phase 1)
 - A2. Mathematics (Phase 2)
- B. STEM Courtyard
- C. AG Engineering / Horticulture/ Pedestrian Elevator
- D. Horticulture Field Lab
- E. New Service Access

Athletics: Field House / Club House



Major Capital projects have been identified and committees have been formed

Major planning starts next week
Infrastructure meeting

Weekly sessions (Tuesday – Thursdays) will be held to capture the needs of each project. Depending where the project is in the planning process.

Updates and drafts will be reported back to the campus

PROJECTS

Campus Center/ABC Building
Veterans Resource Center
Science & Engineering Building
Athletics (Gym, Stadium, Field House)
Public Safety Training Facility
Student Services Building & Welcome Center
Arvin Satellite Campus
Parking Structure
Delano LRC
Agriculture Building