



With the generous support of the California Community College Chancellor's Office, the Kern Community College District announces The Kern Promise: a collaboration of educational partners to improve outcomes for students across the educational spectrum.

The Partnership

BAKERSFIELD COLLEGE

Bakersfield College provides opportunities for students from diverse economic, cultural, and educational backgrounds to attain Associate and Baccalaureate degrees and certificates, workplace skills, and preparation for transfer. BC's rigorous and supportive learning environment fosters students' abilities to think critically, communicate effectively, and demonstrate competencies and skills in order to engage productively in their communities and the world.



CSUB serves more than 8,720 students and with over 70% of its alumni remaining with careers within the central valley. CSU Bakersfield supports ongoing social, cultural and economic development in the region. The University collaborates with partners in the community to increase the region's overall educational attainment, enhance its quality of life, and support economic development in Kern County.



The Kern High School District is the largest 9-12 high school district in California comprised of more than 35,000 students and is focused on tailoring the educational pipeline. KHSD is comprised of 18 Comprehensive campuses, 5 Alternative Education campuses, 4 Special Education centers, 3 Career Technical Education sites, 1 Adult Education Center and 1 Charter School. KHSD values the importance of clarifying pathways and recognizing the work students accomplish during high school.

Contacts



KCCD

Thomas Burke
Chancellor
ChancellorOffice@kccd.edu



Bakersfield College

Sonya Christian
President
sonya.christian@bakersfieldcollege.edu



CSUB

Horace Mitchell
President
hmitchell@csub.edu



KHSD

Bryon Schaefer
Superintendent
bschaefer@kernhigh.org



The Kern Promise

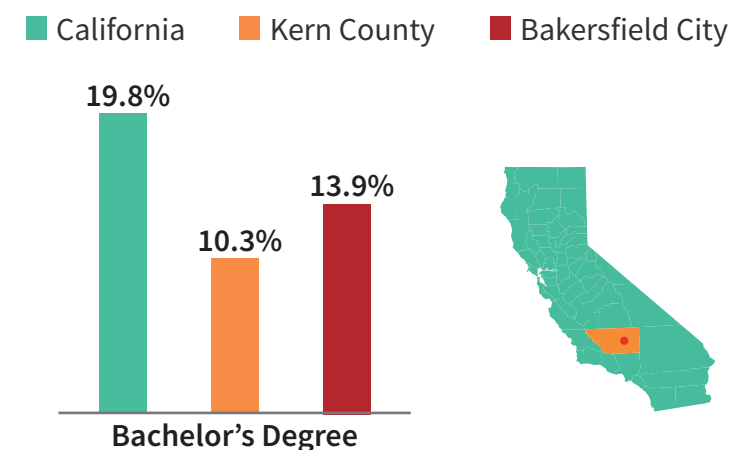
The Need

According to the College Promise Campaign (ACCT, 2016), in the 21st century, a high school diploma will no longer be enough to lead Americans to a good job and decent quality of life. In the next ten years, more than six out of ten jobs will require employees to have more than a high school diploma 1 in 4 Kern residents lives in poverty, with just 22% of Kern County residents 25 years of age and older holding an Associate's Degree or higher, compared with California's average of 39%.



Completing college is MY goal, but it is also important to my family. I will be the first one with a degree!

Highest Level of Degree Attainment by Kern County Residents as Compared to the State



Imagine: Over the next 10 years, Kern County will advance our education attainment rates, increase the health of our community, engage our youth, and decrease poverty.

Average Wage Per Degree



The Kern Promise is characterized by a targeted effort to engage students through a shared responsibility model where students commit to uphold academic standards while Bakersfield College commits to provide quality support.

The Promise

The Kern Promise is a commitment to help students complete their Associate Degree for Transfer (ADT) within two instructional years, using a shared responsibility model where students commit to uphold academic standards. Bakersfield College commits to providing quality support along the student's path to completion, where they can seamlessly transfer to a university or become competitively employable for careers with family-sustaining wages.



Timely Completion

Priority access to the classes students need and close management of student progress help ensure timely referrals, timely interventions, and timely completion of coursework.



Milestone Recognition

Whether recognizing the work accomplished in the high schools, placement on the Dean's List, or graduation with Honors we believe in celebrating the significant scholastic milestones reached along the student's pathway.



Financial Assistance

Reducing remediation and excess units taken, along with scholarships for academically eligible students helps further ease the financial burden of the cost of attendance.



Clear Pathways

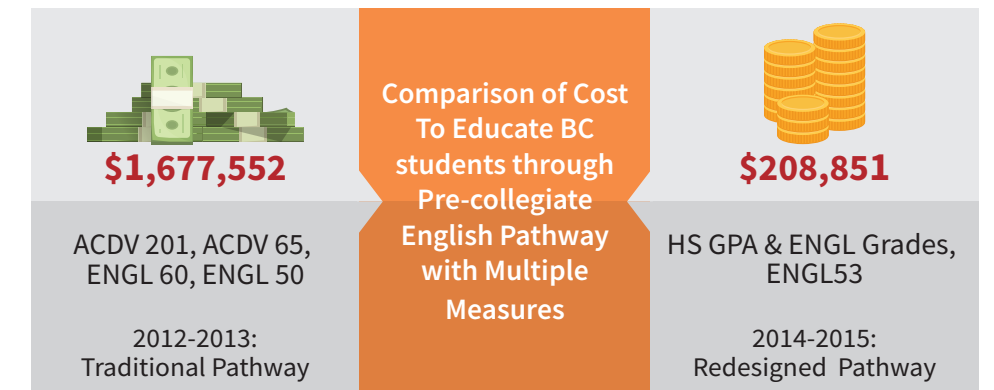
BC is focused on four pillars to help streamline educational planning and remove barriers to student persistence:

1. Relentless degree pathway clarity
2. Efficient pathway on-ramping
3. Support while on the path
4. Meaningful alignment of learning and employment outcomes

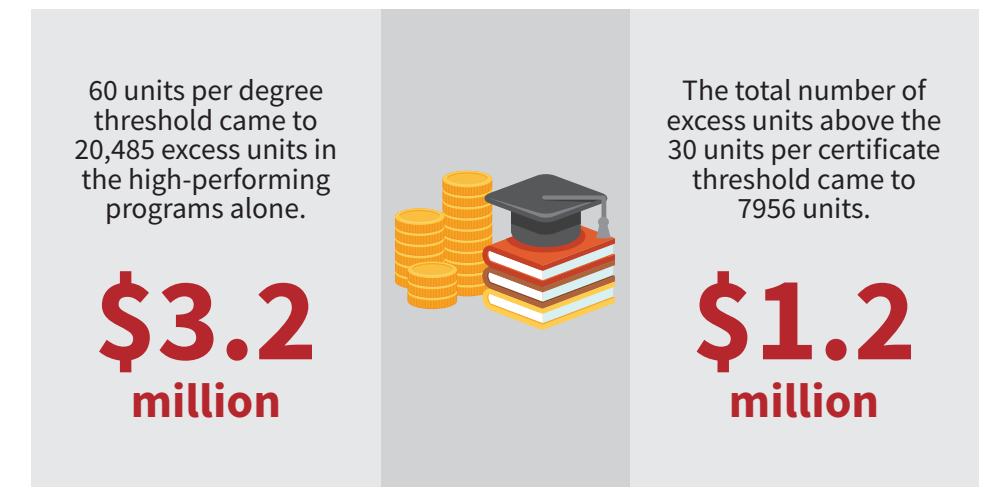
Time is Money

The average student at BC graduates with 85 college-level units. The estimated cost of the extra 25 units is approximately \$1,150 in tuition/fees + \$2,300 in books and living expenses for a total of \$3,450. By addressing college readiness, pathway clarity, and adequate support for timely completion, BC will substantially reduce the cost to completion for participants in the BC Transfer Promise Program. By reducing time to completion we improve the financial landscape for the student and for the community.

Saving Students Time & Money



Cost Savings to the Taxpayer



Kern Community College District Board Of Trustees



Mrs. Kay Meek



Mr. Mark Storch



Mr. Romeo Agbalog



Mr. Dennis Beebe



Mr. John Corkins



Mr. Kyle W. Carter



Mr. William M. Thomas