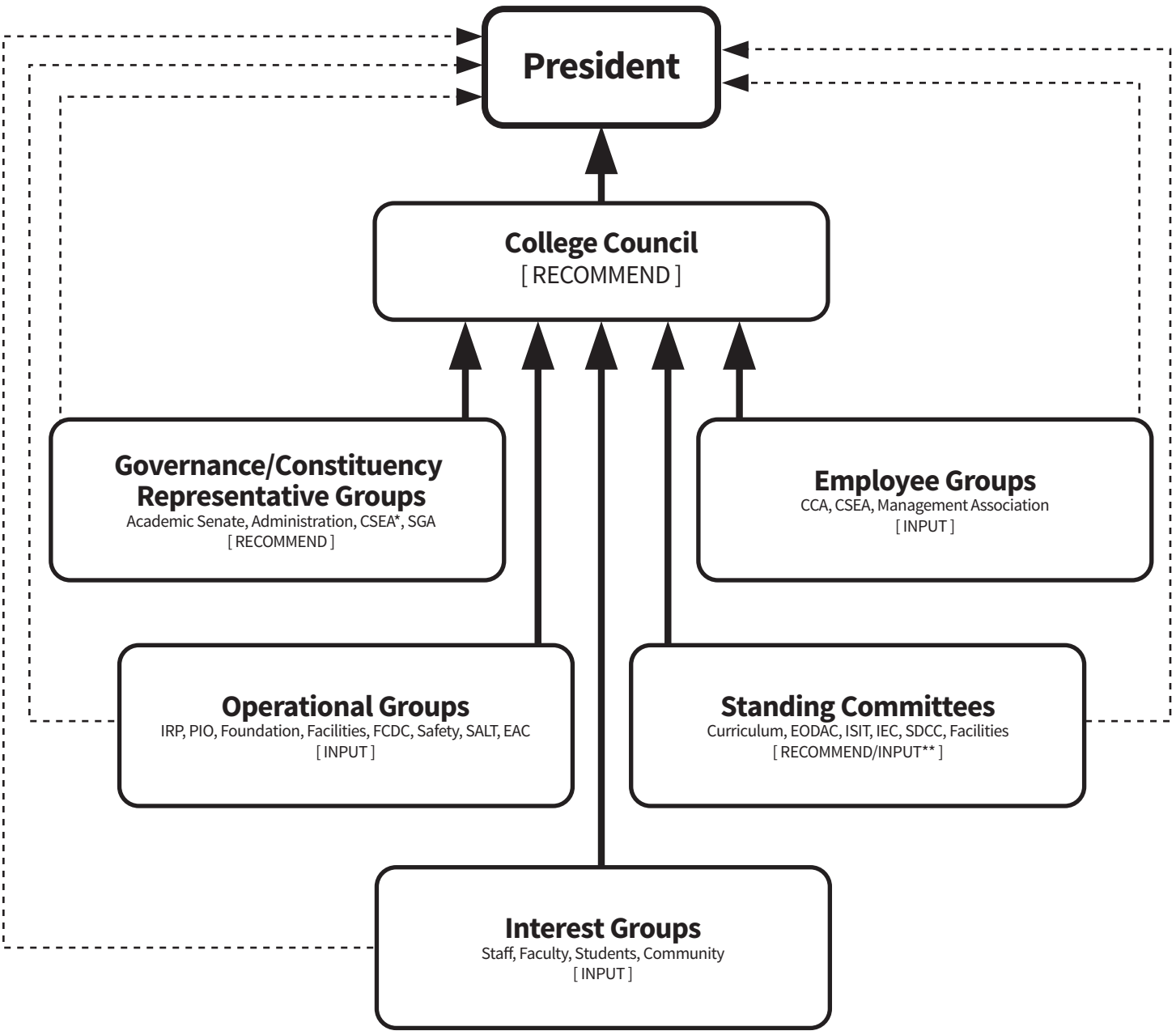


Bakersfield College Governance Decision-Making Process



LEGEND

→ Communication flow to President via College Council Representatives

- - - → Recommendations/Input may also flow directly to President

***** Serves as Classified Senate

****** Recommend/Input via parent governance groups

DEFINITIONS

Recommendation:
A recommendation carries the weight of the constituent group making it, is more formal in nature, and may have statutory/legal ramifications.

Input:
Input is any information that may influence a decision that falls short of a recommendation.

At **Bakersfield College** most college decisions are made by the President¹ (or designee) with recommendations and input from a variety of groups. Formal recommendations and/or input may be made by these groups as described below:

- **The College Council**² is a formal structure through which many recommendations, input, and communication flow.
- A number of **Governance/Constituency Representative Groups**³ have responsibilities to make recommendations to the President through College Council or through direct lines of communication. Those groups are: Academic Senate, College Administration {Link to_Functional Organizational chart}, California School Employees Association (CSEA), and Student Government Association (SGA). These groups take their authority from various sections of Education Code, AB1725, SB235, and Title 5.
- **Standing Committees**⁴ make recommendations and provide input on relevant issues through their representatives on College Council, Administrative Council, Academic Senate, CSEA, SGA or directly to the President.
- There are three formal **Employee Groups**⁵ that may provide input on issues affecting working conditions. CCA represents faculty members, CSEA represents classified staff, and the Management Association represents managers.
- **Operational Groups**⁶ of the college provide input directly to the President or through College Council. Operational groups may include: Institutional Research and Planning, Public Information, the College Foundation, the Facilities Committee, Faculty Chairs/Directors Council, and the Safety Committee.
- Input is also provided by **Interest Groups**⁷ that may include faculty, staff, students, advisory committees, and other community members.

Any employee or student of the college may raise issues, voice concerns, and/or provide input on issues under discussion or consideration by way of the groups listed above.