

AB 86

**WHAT HAS HAPPENED?
WHAT IS HAPPENING?
WHAT ELSE SHOULD HAPPEN?**

Sonya Christian, John Means

Janet Fulks, Vicki Spanos

Jodi Loeffler, Leah Carter

Rich McCrow, Terri Nuckols

December 4, 2014

CONVERGENCE AND OPPORTUNITY



John Means



Sonya Christian

CONVERGENCE AND OPPORTUNITY

1. Today: The K-12 Pipeline + Adult Literacy + Parent Literacy
2. Our demographics: Poverty, low educational attainment levels
3. We have done good work. We are doing good work. Is there more we can do?
4. Who else can help us?
5. Should we be worried about the potential AB 86 funding?

CONVERGENCE AND OPPORTUNITY

TODAY: THE K-12 PIPELINE + ADULT LITERACY + PARENT LITERACY

Important to see the whole picture so that the whole can be bigger than the sum of the parts

K-12 Pipeline + BC the work that is happening and what else can happen

Adult Schools + BC the work that is happening and what else can happen

Note: The October Report completed for the KCCD Consortium

CONVERGENCE AND OPPORTUNITY

TODAY: THE K-12 PIPELINE + ADULT LITERACY + PARENT LITERACY

Table 6. 2013-14 Enrollments per Program

Consortium Members		Basic Skills (1)	Classes for Immigrants (2)	AWD (3)	Short-term CTE (4)	Apprentice -ship (5)
K-12 Districts	<i>Bakersfield (Kern)</i>	5617	2689	302	2676	0
	<i>Delano</i>	596	388	93	180	0
	<i>McFarland</i>	78	62	3	0	0
	<i>Mojave</i>	0	0	0	0	0
	<i>Mono COE</i>	20	38	0	0	0
	<i>Porterville</i>	950	120	20	1010	0
	<i>Sierra Sands</i>	267	67	0	0	0
	<i>Tehachapi</i>	57	0	0	0	0
	<i>Wasco</i>	144	0	0	0	0
Colleges	<i>Bakersfield</i>					
	<i>Credit</i>	7332	789	63	N/A	216
	<i>Noncredit</i>	3251	0	0	0	

Source: October draft Report

CONVERGENCE AND OPPORTUNITY

OUR DEMOGRAPHICS: POVERTY, LOW EDUCATIONAL ATTAINMENT LEVELS

John Husing's message

A parent's message

A student's message

CONVERGENCE AND OPPORTUNITY

WE HAVE DONE GOOD WORK. WE ARE DOING GOOD WORK.
IS THERE MORE WE CAN DO?

One possibility for BC:
Expand Job Skills certificates +
Enhanced Noncredit

CONVERGENCE AND OPPORTUNITY

WHO ELSE CAN HELP US?

It takes a village

(Garden Pathways, Homeless Center,
Building healthy Communities,)

CONVERGENCE AND OPPORTUNITY

SHOULD WE BE WORRIED ABOUT THE POTENTIAL AB 86 FUNDING?

No. But we can be smart.

KHSD AND BC



Janet Fulks



Vickie Spanos

THE CHALLENGE

Nationwide, we must **increase the number of adults** who have enough education and skills to enroll in postsecondary training and complete a credential leading to a family-supporting career.

Earning such a credential is one of the most effective ways to climb out of poverty, **yet 93 million adults (over half of the U.S. workforce, age 18-64), lack the basic literacy and math skills** needed to enter credit-bearing college courses.

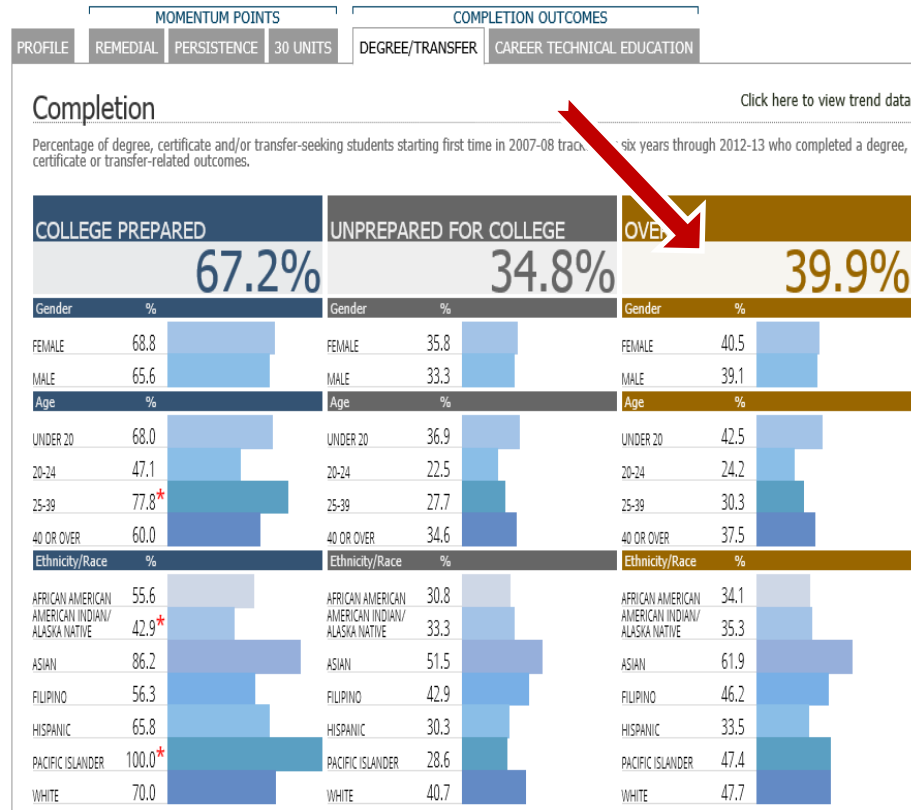
Jobs for the Future

<http://www.jff.org/initiatives/accelerating-opportunity>

IDENTIFYING ISSUES

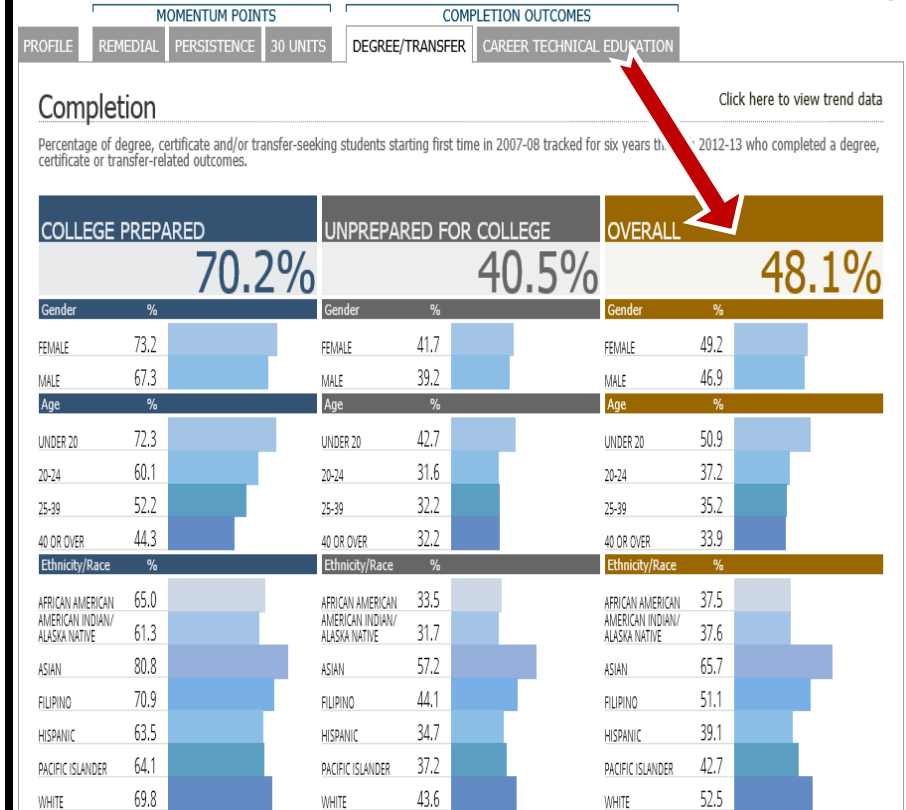
Bakersfield College

[Click here to select a different college](#)



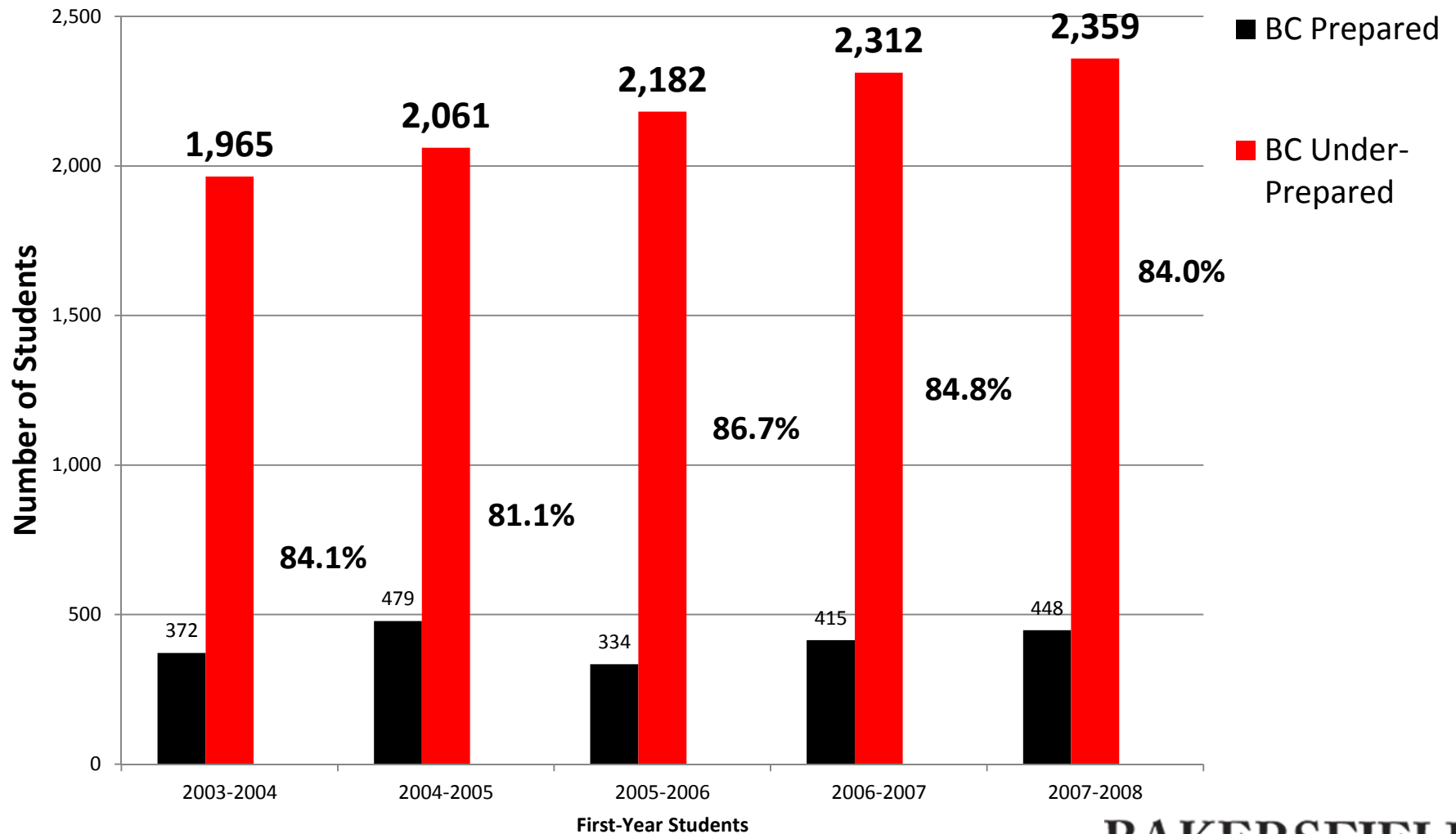
Statewide

[Click here to select a different college](#)



BC Student Profile: More First Generation, More Hispanic, More Underprepared

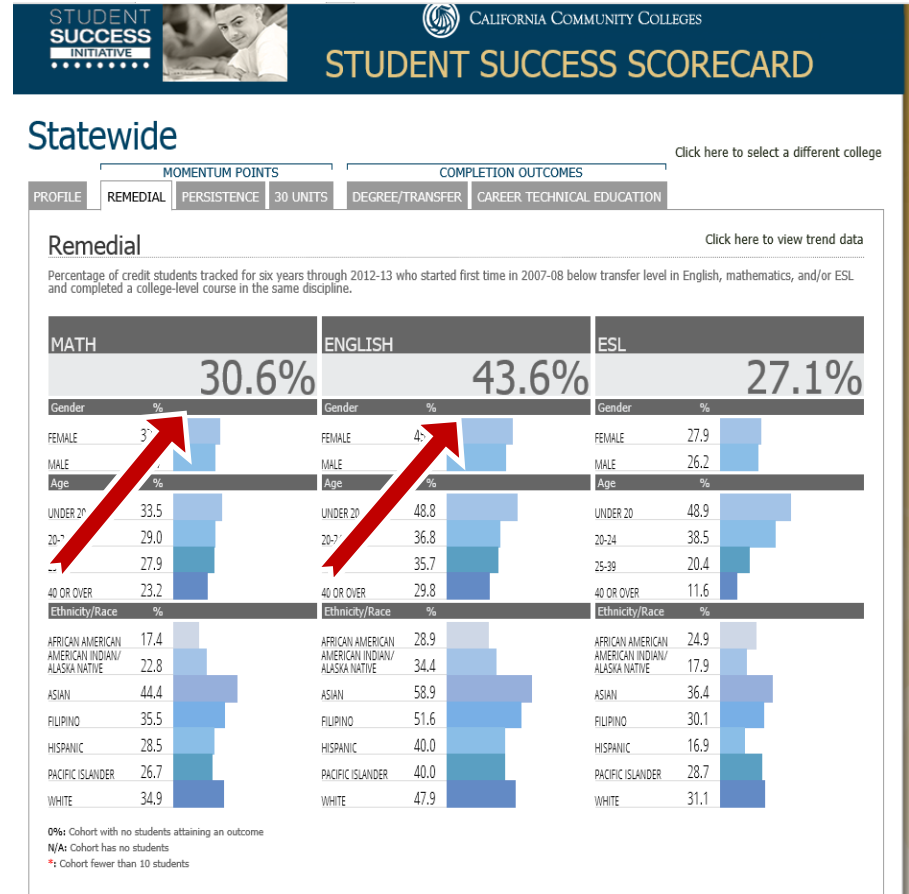
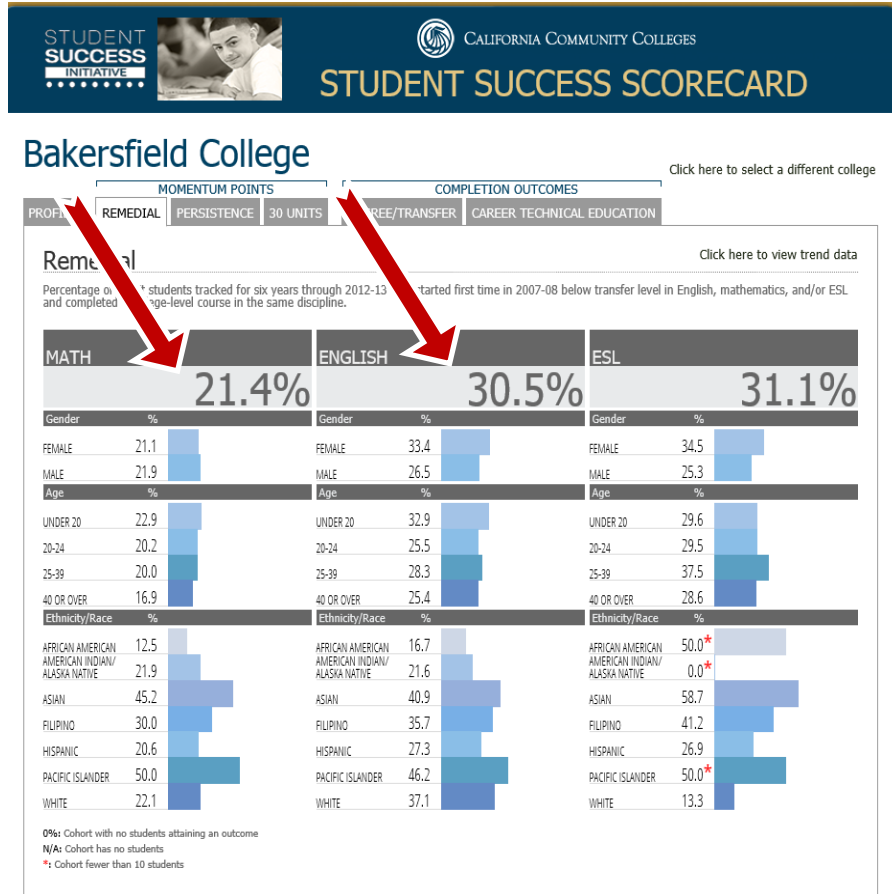
DISTRIBUTION OF UNDERPREPARED COMPARED TO COLLEGE-PREPARED FIRST-YEAR STUDENTS AT BAKERSFIELD COLLEGE



STUDENTS IN 2013 FRESHMAN COHORT AT BC

	unprepared	
Writing	71%	Includes percent placing below English 1A
Math	87%	* includes those placing below intermediate algebra only
Reading	40%	Includes percent placing below College level reading

IDENTIFYING ISSUES



**BAKERSFIELD
COLLEGE**

CHANGES INSTITUTED

- Change to Accuplacer
- Implementation of Multiple Measures
- Student support
- ASTEP - **Odella**
- Latino Padrinos
- Accelerated & Compressed Curriculum
- Math Lab (Self-paced) Contextualized
- Short CTE programs
- Rural Initiatives
- CalSOAP



MULTIPLE MEASURES PROCESS NOT BY A SINGLE TEST ALONE: MULTIPLE MEASURES

MATH Multiple Measures

Measures used:

1. Placement test score
2. Highest level math class with grade of B or **higher and**
3. HS GPA of 3.0 or higher

ENGLISH Multiple Measures

Measures used:

ESL placement into English 1A, ERWC (with C or better) EAP (college ready) or Placement test into English 1A

To BUMP

1. HS GPA (3.0 or above without PE) – called Cal Grant GPA
2. Highest English class with grade of B
3. 4 years of English with C or Better
4. AP English jr/sr year with grade of B
5. Reading compass score of 06 level (82-99)
6. 9 of any potential A-G courses (college prep)

MULTIPLE MEASURES OUTCOMES

- Location of the placement testing –
 - significant 199 higher placements in Math
 - 65 in English
 - (total 264)
- Multiple measures shift to college level courses based
 - Bumped = 361
 - Accelerated = 199 (total 560)
- 824 semesters saved for 454 students
- Transcript review = opportunity to direct qualified students into accelerated and compressed course sections.

ACCELERATION & COMPRESSION

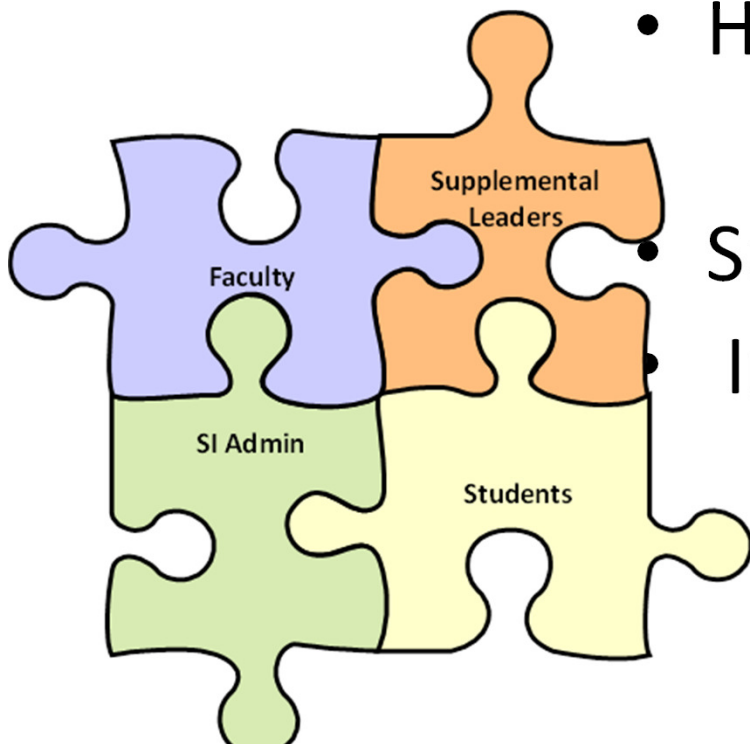
Level 6	EngB1A		LRNCB510	Calculus and higher		College Reading	Level 6	TRANSFER
Level 5	EngB50	EngB53	LRNCB502	Transferable Math B1B, B2, B22, B23	College level	ACDVB50	ACDV B61	Level 5
Level 4	EngB60			Transferable Math B1A, , B4A, B22, B23, Psych B5				ACDVB62
Level 3	ACDVB65			MathB70 Int. Algebra	LRNC530			Level 3
Level 2	ACDVB20			Math B 60 Beg Algebra		ACDVB20		Level 2
Level 1	1b Retest			Math B50 Pre-Algebra	ACDVB72	1a Retest		Level 1
Level 0				ACDVB77 Arithmetic				Level 0

- Compression: Same content shorter time -2 English courses, 3 ENSL courses, 1 math course
- Acceleration: Change of content and shortened pathway English, ACDV
- CONSIDER – the efficiency for the college and the seats opened for students

INNOVATIONS IN BASIC SKILLS DELIVERY



- Contextualizing in CTE Welding and Auto
- Math Lab - Rachel
- Critical Academic Skills (CAS)
- Habits of the Mind (HoM)



Supplemental Instruction



IT'S POSSIBLE
AT BAKERSFIELD COLLEGE
A Habits of Mind Initiative

DEVELOPING STRUCTURED PATHWAYS

- Student Services Success Plan (SSSP) –
 - Orientation – HS work, F2F and online
 - Assessment & Placement,- Multiple Measures
 - Counseling, Ed Planning and Advising – ASEP & CSEP
 - Follow-up
- Student Educational Pathways (SEPs) – Spring 2014 – Degreeworks, EPI
- Student Equity Plan – reaching out to mitigate disproportionate impact



ALREADY ON THE CCC – EPI AGENDA

[HTTP://CCCEDPLAN.ORG/STRUCTURED-PATHWAYS](http://cccedplan.org/structured-pathways)

The screenshot displays the Education Planning Initiative (EPI) website. The header includes the CCC logo and the text "Education Planning Initiative" with a search bar. The navigation menu contains: Home, Goals, Project Plan, Structured Pathways, Governance, About, and RFP INTENT TO AWARD. The "Structured Pathways" page features a sidebar with links for EPI Documents, RFP NOTICE, and contribution options for students, faculty, and surveys. The main content area is titled "Structured Pathways for Student Success" and includes an image of a graduation cap on a path of steps. The text describes the implementation of a Service Oriented Architecture (SOA) and a student portal experience starting in September 2008. A section titled "CCC Portal Architecture" includes a diagram and a link to enlarge it. The diagram, "CCC Systemwide Portal Architecture", is a complex flowchart showing the integration of various services like Career Center, College Services, and CCCassess across different user roles and processes. The bottom of the screenshot shows a Windows taskbar with several open applications and a download bar with files like "Structured Pathwaypdf" and "Biology_TMC_FINAL....doc".

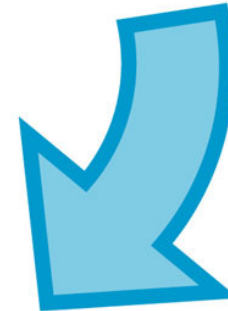
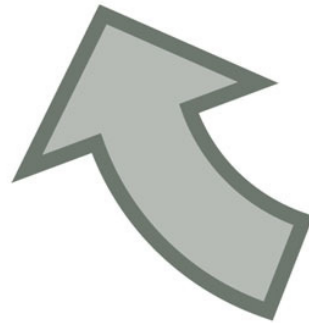
EPI

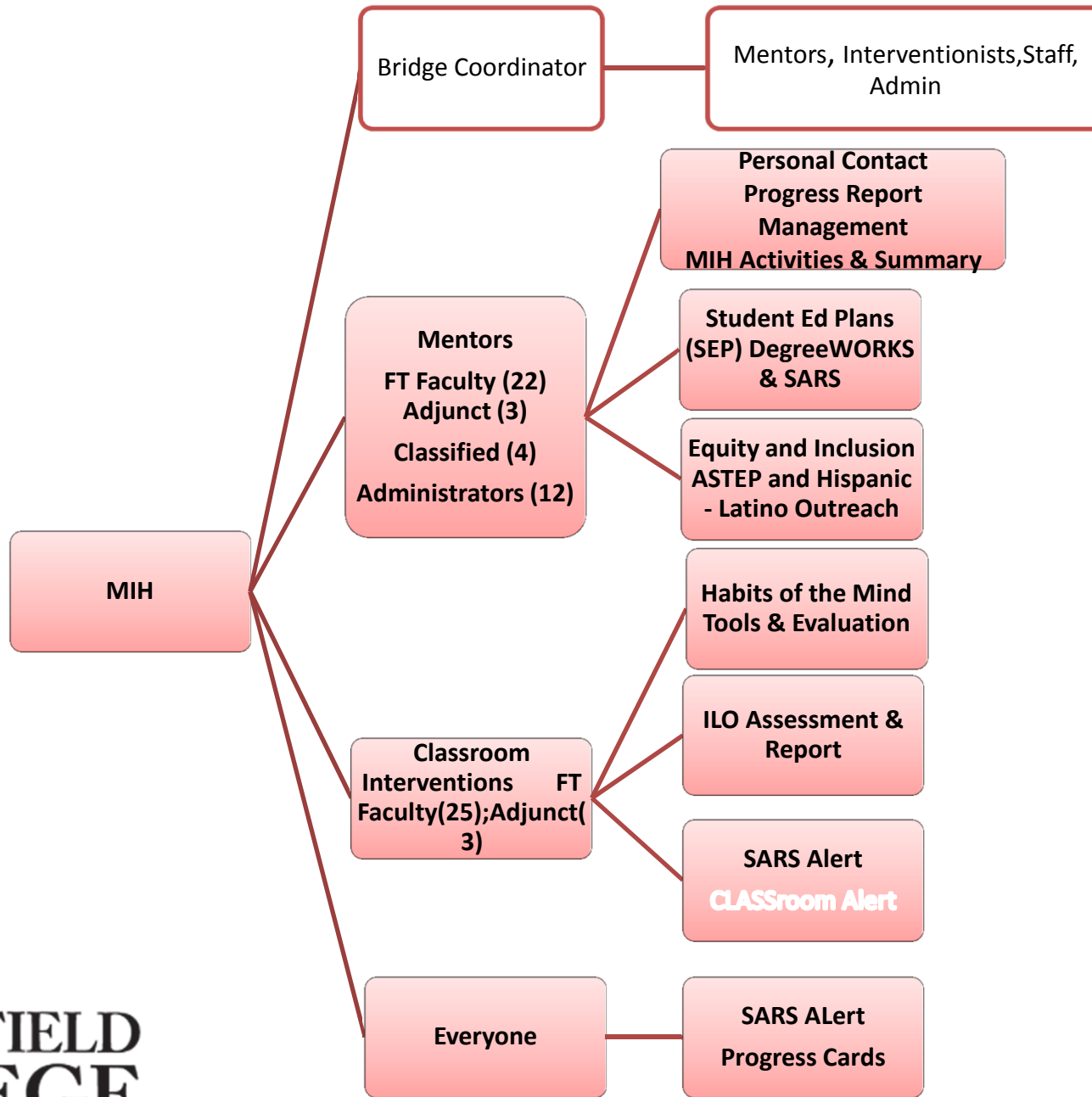
Activities such as Applying for Admission and Education Planning add to the systems understanding of the student's needs based on data stored in their profile.

Analytics are used with the students profile to present a checklist of activities and information to keep the student on track to reach their education goals.



A workflow based reminder system messages students via text, email, and portal messaging on next steps and past due activities.





Potential Curricular considerations

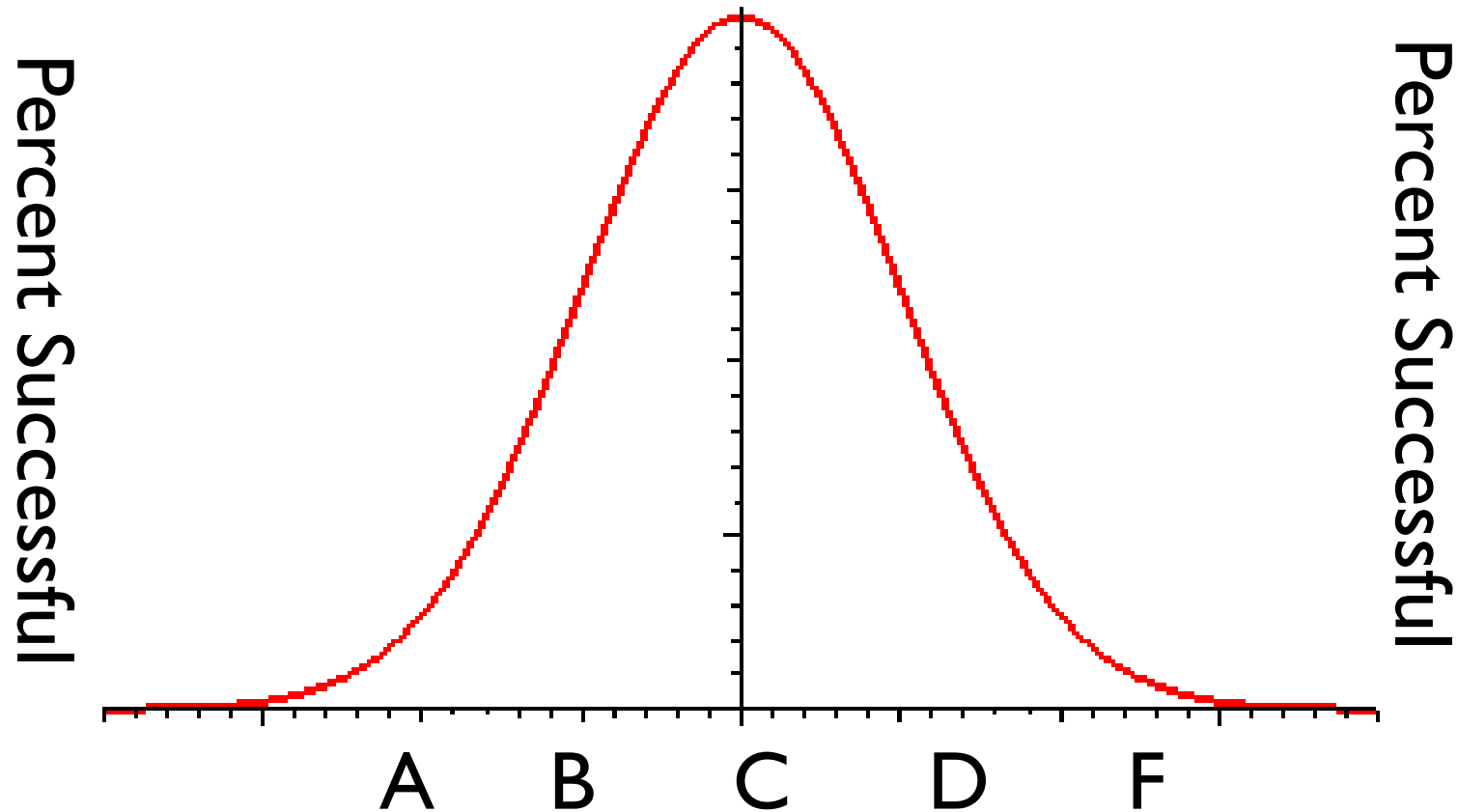
- Noncredit

WHAT IS NONCREDIT?

- Fact: Noncredit serves over 350,000 FTES in our system and represents about half of the basic skills work in the CCCs.
- Fact: Students are significantly more diverse, represent students with greatest need and least likely to succeed [Link to data](#)
- Fact: Noncredit offers flexible schedules, increased contact hours, self paced learning

ALL AT NO COST to the STUDENT

TRADITIONAL EDUCATIONAL EXPECTATIONS AND ACCOUNTABILITY



Grades for a specified semester
Time is the independent variable
Success is dependent on the time

ADULT ED & NONCREDIT EDUCATION

Time

Percent Successful

Success is the independent variable and time is dependent on success

COURSE ALIGNMENT PRIOR TO TRANSFER

Discipline	Credit	Noncredit	Likely bridge noncredit to credit
Math	Four levels CB 21 A, B, C, D	Six levels CB 21 A, B, C, D, E, F	Levels C & D
English	Four levels CB 21 A, B, C, D	Seven levels CB 21 A, B, C, D, E, F, G	Level B or C
Reading	Four levels CB 21 A, B, C, D	Five levels CB 21 A, B, C, D, E	Level A or B
ESL	6 levels ESL Reading CB 21 A, B, C, D, E, F	8 levels ESL Integrated CB 21 A,B,C,D,E, F, G, H Includes vocational and Cultural skills	Most noncredit end 2 levels prior to English 1 A at Level B
	6 levels ESL Writing CB 21 A, B, C, D, E, F		
	6 levels ESL Speaking & Listening CB 21 A, B, C, D, E, F		

WHAT KHSD IS DOING?

- English classes - ERWC
- CAPP
- Math classes



KERN HIGH SCHOOL DISTRICT

A TRADITION OF EXCELLENCE SINCE 1893

NEEDS TO ADDRESS

- Literacy
- Parent Education
 - ESL
 - Reading
- CTE

STREAMLINED EDUCATION TO CAREER PATHWAYS

Accelerated and
integrated Adult
Basic Education
and GED programs

Clear

Postsecondary
credentials with
value in the labor
market

career pathways

More Adult Learners Succeeding in Postsecondary Education

Important Indicator	What it looks like
Integrated pathways	Integrate basic skills education and CTE Clear connections between training and employment.
Scale and sustainability	Broken silos and partnerships across institutions and communities.
Comprehensive student supports	Access, integrated and embedded basic skills
Stakeholder engagement	Wide reaching diverse partnerships education, workforce, community.
Professional development	Consistent coherent training
Policy	High impact policies
Leadership and staff commitment	Adequate resources are aligned with decision making and planning.

Structured Pathways

Providing Structured Pathways to Get Students to Completion

<http://www.wsac.wa.gov/sites/default/files/2014.ptw.%2857%29.pdf>

1. Mandated or proactive intake processes to guide student decision-making .
2. Balance between flexibility and prescription in student selection of courses and majors.
3. Instructional programs that are clearly defined .
4. Proactive and ongoing supports at each stage of student progress.
5. Instructional programs that are aligned with employment and/or transfer requirements.

Institutional incentives providing incentives—both fiscal and non-fiscal—for faculty and staff to collaborate in examining data and developing more structured pathways for students. Non-fiscal incentives using existing program review processes to better define and prescribe instructional programs. Feedback from accreditation agencies about learning outcomes assessments to begin important conversations about program requirements and course content.

Structured Pathways

Characteristics	What does this look like for Kern
Mandated or proactive intake processes to guide student decision-making	
Balance between flexibility and prescription in student selection of courses and majors.	
Instructional programs that are clearly defined .	
Proactive and ongoing supports at each stage of student progress	
Instructional programs that are aligned with employment and/or transfer requirements.	

BAKERSFIELD ADULT SCHOOL AND BAKERSFIELD COLLEGE



Leah Carter



Jodi Loeffler

DATA FACTS

WIA II STUDENTS ESL, GED, ABE, ASE, & EL CIVICS

- **Over 12,000 students served in 2013-2014**
- **No Pretest: 501 students**
- **No Post-test: 3,036 students**
- **1,128 (19%) scored below a 236 but enrolled in HSD/GED**

PAYMENT POINTS BY PROGRAM

- ❖ ABE 851 qualified enrollees earning 940 payment points



+213 (29%)

- ❖ ESL 2,246 qualified enrollees earning 1,826 payment points.



+ 359 (25%)

PAYMENT POINT BY PROGRAM (CONT.)

❖ **ESL Family Literacy no longer a separate category, but counted in ESL.**

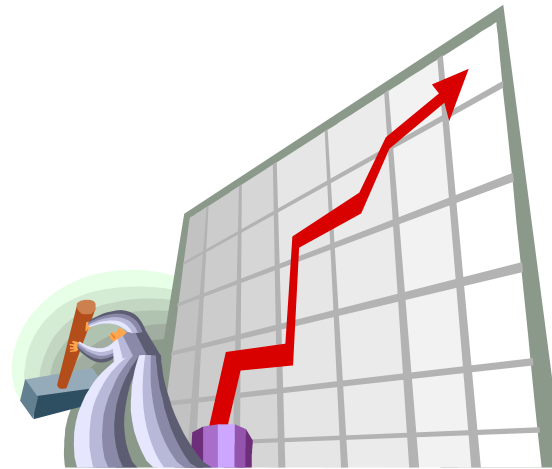
❖ **ASE 1,641 qualified enrollees earning 1,244 points.**



• **+604 points (93%)**

PAYMENT POINTS BY PROGRAM (CONT.)

- **Civic participation 1,916 qualified enrollees earning 1,600 points.**
- **+350 points (28%)**
- **Citizenship prep 157 qualified enrollees earning 73 points**
- **+47 points (180%)**



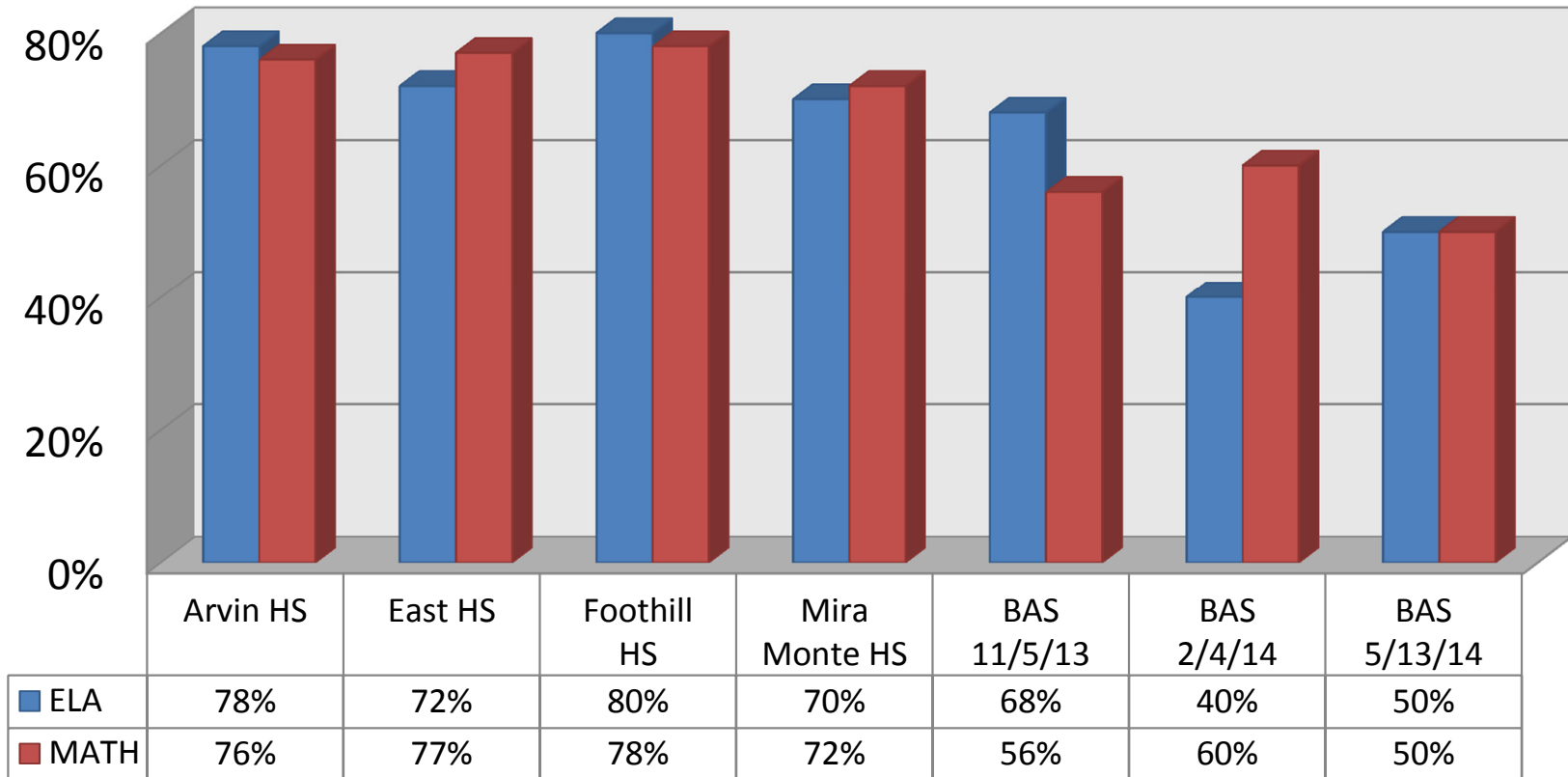
GRAND TOTAL

- 6,811 qualified enrollees
 - + 278 or 4.28% qualified students

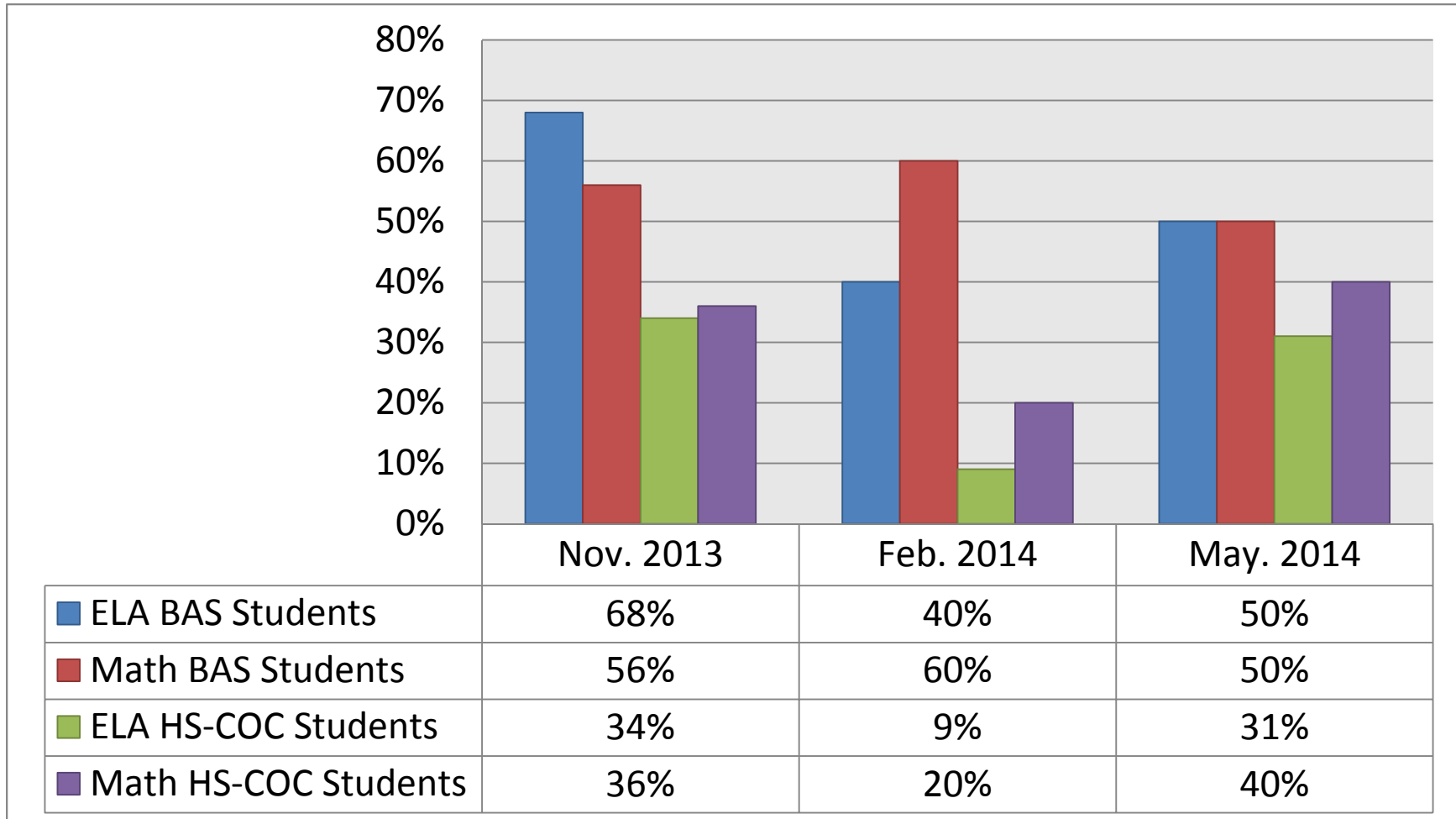
- Grand total = 5,683 total points.
 - +1,370 points.



CAHSEE PASSING RATES 2014 GRADE 10



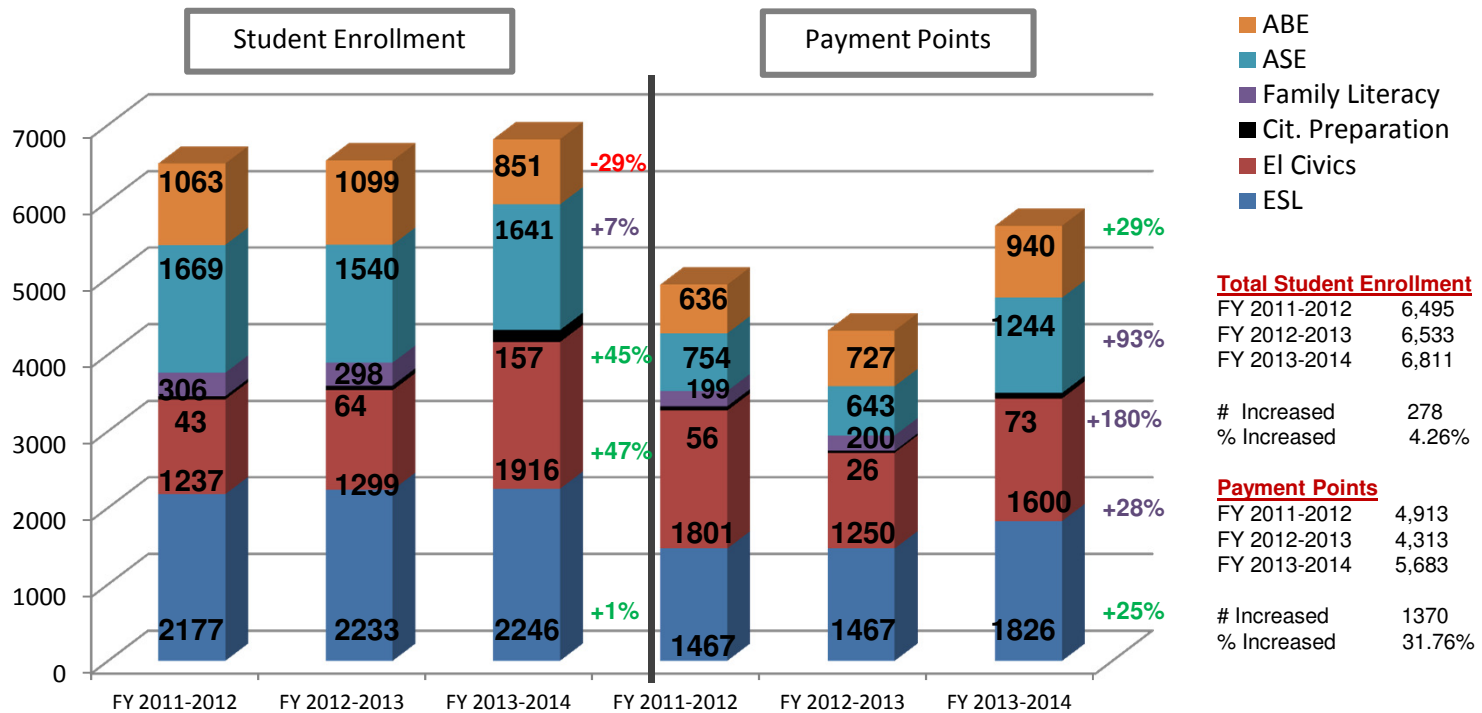
BAS CAHSEE PASSING RATES 2013-2014



ADDITIONAL OUTCOMES

- **BAS GED earned: 268 students**
(average passers 375-425 students annually)
- **High School Diploma: 319 students**
- **TOTAL contribution to KHSD grads = 587 students**

Payment Points Summary and WIA Student Enrollment Comparison for Fiscal Years 2011-12 to 2013-14 BAS Agency 1470 only WIA Funded Programs only



NATIONAL REPORTING SYSTEM PERFORMANCE REPORT FOR BAS 2013-2014

Entering Educational Functional Level	California Performance Goal FY 2013-2014	Percentage Completed (against all enrollees)	Percentage Completed (against enrollees with paired scores)
ABE Beginning Literacy	48%	42.86%	75.00%
ABE Beginning Basic Education	57%	53.49%	69.70%
ABE Intermediate Low	52%	68.07%	92.05%
ABE Intermediate High	34%	52.21%	71.36%
ASE Low	36%	47.49%	82.57%
ASE High	N/A	23.70%	42.81%
ESL Beginning Literacy	65%	75.86%	93.62%
ESL Low Beginning	66%	68.80%	89.58%
ESL High Beginning	62%	57.93%	75.90%
ESL Low Intermediate	55%	50.48%	64.01%
ESL High Intermediate	51%	47.31%	58.09%
ESL Advanced	24%	26.63%	32.80%

BAKERSFIELD COLLEGE OFFERS SIX CAREER PATHWAYS



– Agriculture and
Natural Resources



– Engineering and
Industrial
Technology



– Arts, Media and
Communication



– Health Services



– Business,
Management and
Technology



– Public and Human
Services



AGRICULTURE AND NATURAL RESOURCES

- Agriculture Business Management ([AA,AS,CA](#))
- Animal Science ([AA,AS,CA](#))
- Environmental Horticulture ([AA,AS,CA](#))
- Forestry ([AA,AS,CA](#))
- Horticulture ([AA](#))
- Plant Science ([AA,AS,CA](#))
- Registered Veterinary Technical Option ([JSC](#))

AGRICULTURE AND NATURAL RESOURCES





ARTS, MEDIA AND COMMUNICATION

- Art ([AA](#))
- Communication ([AA](#), [CA](#))
- Associate in Arts in Communication Studies for Transfer ([AA](#))
- Digital Arts ([AA](#), [CA](#))
- Journalism ([AA](#))
- Music ([AA](#))
- Theatre Arts ([AA](#))



BUSINESS, MANAGEMENT AND TECHNOLOGY

- Accounting ([AA](#))
- Administrative Office Assistant ([AA](#))
- Bookkeeping ([CA](#))
- Business Administration ([AA](#))
- General Business ([JSC](#))
- General Management ([JSC](#))
- Marketing ([AA,CA](#))
- Office Assistant ([JSC](#))
- Office Assistant ([CA](#))
- Real Estate ([AA,CA](#))
- Retail Management ([CA](#))
- Computer Information Systems ([AA,AS,CA](#))
- Computer Science ([AS,CA](#))
- Web Development: Cross-Discipline Emphasis ([AS,CA](#))
- Web Development: Design Emphasis ([AS,CA](#))
- Web Development: Web Programming Emphasis ([AS,CA](#))



ENGINEERING AND INDUSTRIAL TECHNOLOGY

Apprenticeship

- Apprenticeship - Carpentry ([AA,CA](#))
- Apprenticeship - Electricians ([AA,CA](#))
- Apprenticeship - Operating Engineers ([AA,CA](#))
- Apprenticeship - Plumbers and Steamfitters ([AA,CA](#))
- Apprenticeship - Sheet Metal ([AA,CA](#))

Architecture/Architectural Drafting

- Architectural CAD ([JSC](#))
- Architectural Drafting ([AA](#))
- Architecture/Architectural Drafting ([AS](#))

Automotive

- Auto Brakes and Wheel Alignment ([CA](#))
- Auto Engine Overhaul ([CA](#))
- Auto Tune-up and Emission System ([CA](#))
- Automotive Heating, Ventilation & Air Conditioning (HVAC) ([JSC](#))
- Automotive Power Trains ([CA](#))
- Basic and Advanced Clean Air Car Course ([JSC](#))
- Industrial Tech. Automotive Option ([AS](#))

Construction Technology

- Construction Technology ([CA](#))
- Industrial Technology, Construction Option ([AS](#))

Electronics Technology

- Electronic Technology ([CA](#))
- Industrial Technology, Electronics Option ([AS](#))

- Engineering ([AS](#))
- Engineering Technology ([AS](#))

Industrial Drawing

- Industrial Drawing ([AA](#))
- AutoCad ([JSC](#))
- Industrial Technology, Industrial Drawing Option ([AS](#))
- Industrial Technology (General) ([AS](#))

Manufacturing Technology

- Basic Machine Tool Operations-Lathe, Mill ([JSC](#))
- Computer Numerical Control Programming ([JSC](#))
- Control Systems Technology ([AS,CA](#))
- Industrial Technology: Manufacturing Technology ([AS](#))
- Manufacturing Technology ([CA](#))

Welding

- Blueprint Reading and Layout for Welders ([JSC](#))
- Gas Metal Arc/Gas Tungsten Arc Welding/Flux Core Arc Welding ([JSC](#))
- Industrial Technology, Welding Option ([AS](#))
- Shielded Metal Arc Welding ([JSC](#))
- Welding ([CA](#))

Woodworking/Cabinetmaking

- Cabinetmaking ([CA](#))
- Industrial Tech. Woodworking and Cabinetmaking Option ([AS](#))
- Woodworking/Cabinetmaking ([JSC](#))





INDUSTRIAL TECHNOLOGY ENGINEERING







HEALTH SERVICES

- Emergency Medical Technology Program, EMT-1 ([JSC](#))
- Registered Nursing ([AS](#))
- Nurse Assistant ([JSC](#))
- Vocational Nursing ([CA](#))
- Radiologic Technology ([AS](#))
 - Principles of Fluoroscopy ([JSC](#))
 - Principles of Venipuncture ([JSC](#))



PUBLIC AND HUMAN SERVICES

Child Development & Family Relations

- Child Development and Family Relations ([AS](#))
- Child Development Assistant Teacher ([JSC](#))
- Child Development Associate Teacher ([JSC](#))
- Child Development Master Teacher: Infant Toddler ([CA](#))
- Child Development Master Teacher: Special Education ([CA](#))
- Child Development Teacher ([CA](#))

- **Correctional Administration** ([AA](#))

- **Criminal Justice** ([AA](#))

Fire Technology

- Chief Officer Certification (Nfpa Standard 1021) ([CA](#))
- Fire Officer Certification (Nfpa Standard 1021) ([CA](#))
- Fire Technology ([AA,AS,CA](#))
- Wild land Fire Technology ([AS](#))

Food/Nutrition

- Child Nutrition Management Program ([CA](#))
- Child Nutrition Program Management Option Associate in Science Degree ([AS](#))
- Culinary Arts ([AS,CA](#))
- Dietetic Services ([CA](#))
- Food Service Management ([AS](#))

- **Human Services** ([AA,AS,JSC](#))



APPRENTICESHIP

- *Shelley-Maloney California Apprenticeship Standards Act*
- Consists of classroom instruction & on the job training
- Joint effort between BC & the Trade Unions
- Trades:
 - ❖ Carpenters
 - ❖ Electricians
 - ❖ Operating Engineers
 - ❖ Plumbers/Pipefitters
 - ❖ Sheet Metal

INTERNSHIP

- You get to experiment!
 - Real world experience helps you make more educated career choices.
- The opportunities to demonstrate your transferable skills,
 - Such as leadership, analytical thinking, communication and interpersonal skills.
- Connect the classroom to the “real world” to enhance your academic experience and performance.
- Networking!
 - Developing professional contacts in the field can help you get hired and get ahead in your career.
- Get your foot in the door!
 - Most companies will hire successful interns over candidates they've just met or who apply online.

NORTH KERN ADULT EDUCATION ALLIANCE



Terri Nuckols

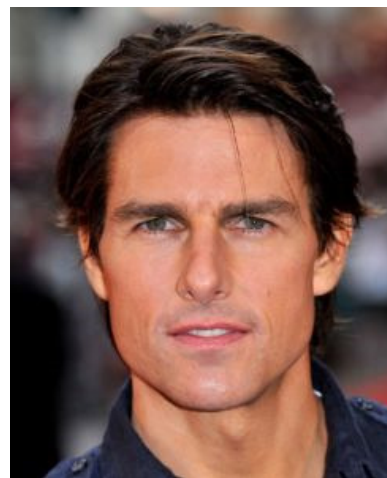


Rich McCrow



Martin Lonza

Valerie
Garcia



Stacy
Hoffman

NORTH KERN ADULT EDUCATION ALLIANCE

Martin Lonza, Principal, Wasco Independence High School

Terri Nuckols, Principal, Delano Adult School

Valerie Garcia, Principal, McFarland Learning Center

Richard McCrow, Director, BC Delano

Stacy Hoffman, Principal, Kern Valley State Prison High School

NORTH KERN ADULT EDUCATION ALLIANCE

Delano Joint Union High School District

Welding Certificate Program

- Shared facility and resources
- Embedded Remediation
- Shared faculty and staff

Lessons Learned

- Joint Use verbaige
- Competition between Adult School, High Schools and College

Students

Delano Adult School

- GED Testing Center
- College transition

NORTH KERN ADULT EDUCATION ALLIANCE

Wasco Independence High School

- Onsite College Courses
- Education Planning Courses

Kern Valley State Prison

- SB 1391 funding instruction offered on-site in state prisons and will expand the courses offered to inmates.
- Bakersfield College Site beginning Spring 2015
- Student support services included (tutor training, advisement, assessment testing)

McFarland Learning Center

- Bakersfield College Visits
- Certified Nurse Assistant/Home Health Certification
- Resource availability

AB 86

**WHAT HAS HAPPENED?
WHAT IS HAPPENING?
WHAT ELSE SHOULD HAPPEN?**

Sonya Christian, John Means

Janet Fulks, Vicki Spanos

Jody Loeffler, Leah Carter

Rich McCrow, Terri Nuckols

December 4, 2014