

# Health Fee Adjustment

Charles D. Collom  
Director  
Student Health and Wellness Center

**BAKERSFIELD  
COLLEGE**

---

# The Mission of the SHWC

*To further the health equity of the educational opportunity. This is accomplished by providing access to **high value, student centered and culturally competent health services**. Services which promote the physical, emotional and spiritual wellness of its students and their academic environment. **This wellness contributes to the educational aim of our college by promoting student persistence and academic success** in congruence with the college's mission, core values and strategic directions.*



# Current Services

Medical Treatment for Short-Term Illnesses	Blood Pressure Screening
Mental Health Support and Counseling	Blood Glucose Testing
Vaccination Services	Male and Female Contraception
FamilyPACT* Services	MediCal Assistance
STD/STI Testing and Counseling	Tobacco Cessation Counseling
Vision Screening	Student Accident Reports
Menstrual Products	Masks, Gloves, PPE
...and much, much more.	

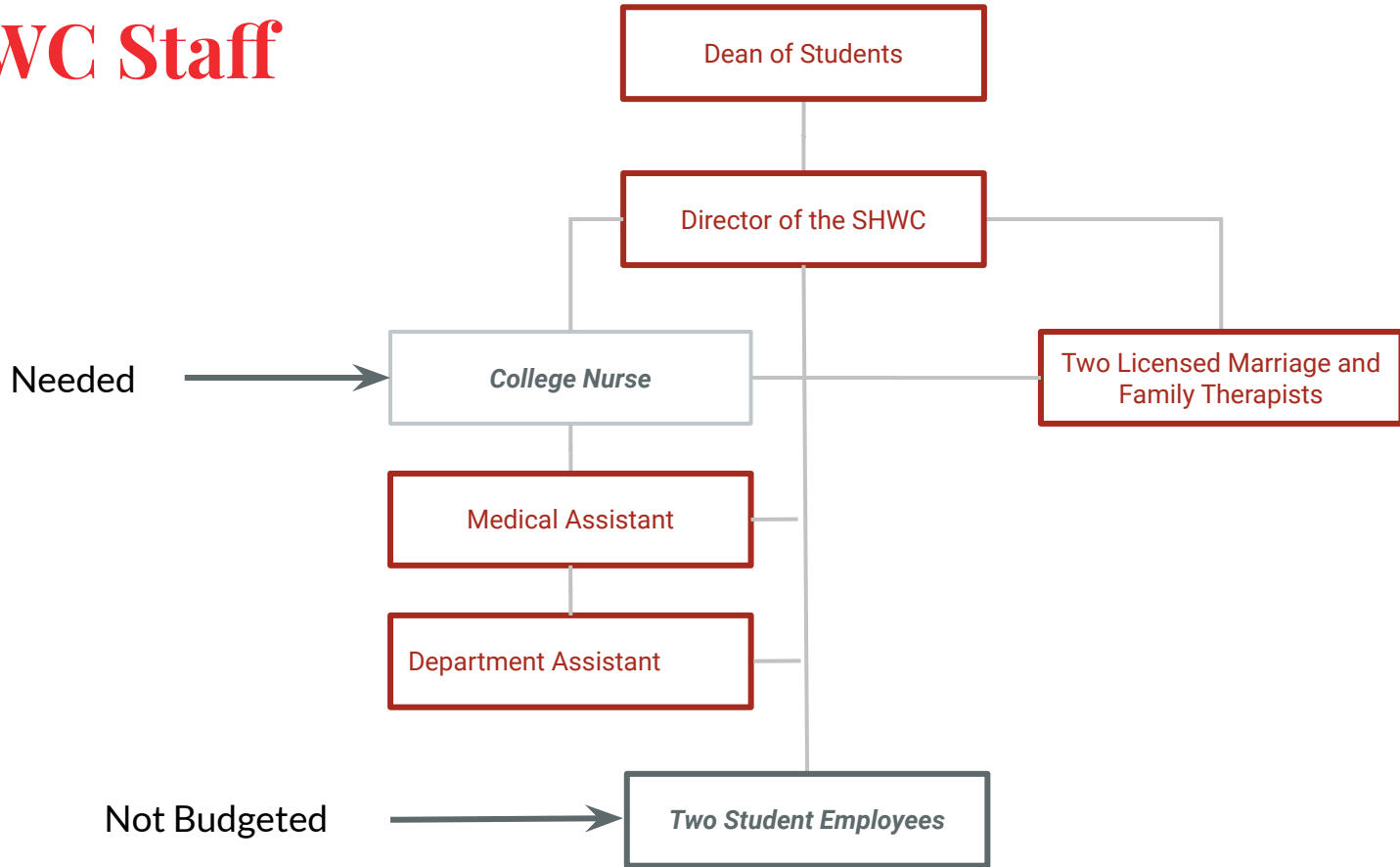
\* External programs may have separate qualifications. We're here to help you navigate the application process.

# Cost Comparisons

How much does one year of healthcare cost on average?

Entity/Agency	Yearly Average
United States	\$ 11,582.00 /person
Veterans Administration	\$ 11,800 /person
MediCal	\$ 12,914 /person
CSU, Bakersfield	\$ 322.80 /student
BC Current	\$ 51 /student
BC Proposed	\$ 74 /student

# SHWC Staff

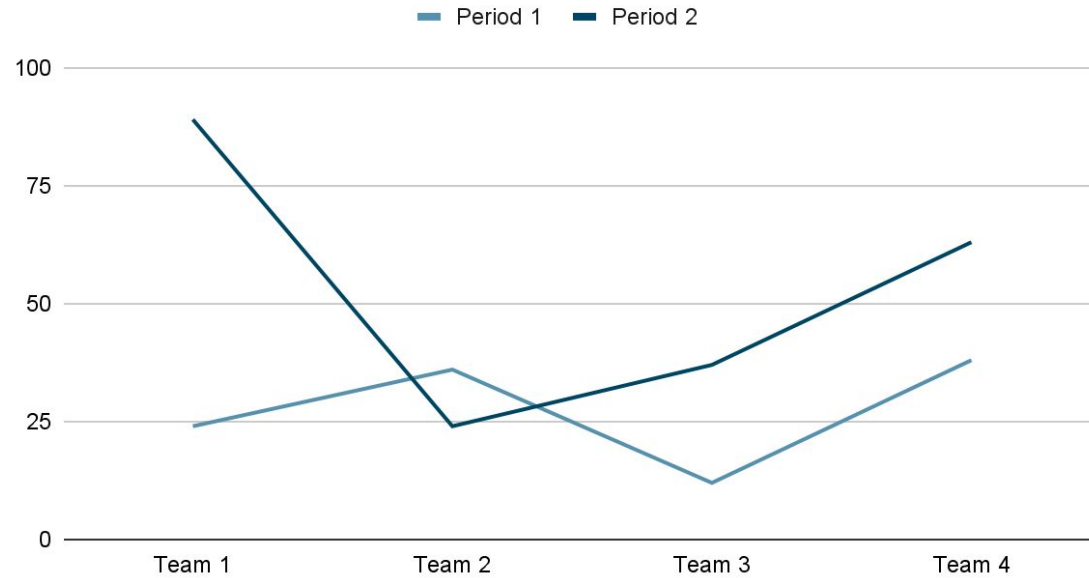


# College Nurse Role/ Responsibilities

- Provides professional nursing care and health services to students.
- Makes independent nursing assessments, diagnoses and evaluations regarding injuries and illnesses and provides first aid.
- Crisis intervention for students in accordance with state regulations and protocols.
- Advises patients on health maintenance and disease prevention.
- Provides referrals for cost-effective, appropriate care and refers the more complex medical or psychological problems to emergency services.
- Interprets and evaluates diagnostic tests to assess patient conditions.
  - blood pressure, tuberculosis, vision, vital signs and in-house lab tests.
- Administers immunizations/vaccines and assists physicians and nurse practitioners during clinical hours.
- Documents patient medical information, condition, treatment, advice and referrals on patient medical charts utilizing electronic medical records.
- Maintains confidential patient medical records.
- Prepares accident reports, immunization reports or tuberculosis results and maintains copies in patient records.
- Serves as a resource to Health Services staff for assistance/support on electronic medical records system.
- Serves as a health educator and advocate for students and the community;
- Provides education in community events and is a community health liaison with the Public Health Department
- Ensures quality patient care by consulting and coordinating with Health College Health Nurse - RN
- Services student and community resources to assess, plan, implement and evaluate community wellness programs; distributes health education materials and participates in health education events as needed.
- Serves as a member of the District's Emergency Response Team.

# Background

Points scored



# The Issue

<b>Labor Expenses</b>		<b>All Revenue</b>	
Clinicians & Supervising Physician	\$ 610,499.91	Student Health Fee	\$ 682,367.00
Support	\$ 137,190.76		
Supplies	???		
<b>Total</b>	\$ 747,690.67		
FY22-23 Projections		<b>Difference</b>	<b>\$ 65,323.67</b>

***The student health fee does not cover the labor expenses of the Student Health and Wellness Center, let alone the cost of any supplies.***



# Proposed Adjustment

	Fall	Spring	Summer
Current	\$ 18	\$ 18	\$ 13
Proposed	\$ 26	\$ 26	\$ 22

The proposed adjustment would commit sufficient resource to the SHWC to ensure we can maintain our current services and continue them through the future with adjustments to inflation.

# What MORE can we do with this adjustment?

- More immunizations
- Shorter wait times in the SHWC
- Additional appointment availability at the SHWC
- More types of patient labs
- Additional on-campus health screenings
- Additional nursing consultations
- Access to health services-sponsored events and activities
- Emergency Response and assess need for - Paramedics
- Blood pressure and pulse monitoring
- Glucose monitoring
- Vision tests
- Tuberculosis testing and referrals calculate
- Body Mass Index and Composition Screenings
- Nursing assessment and physicals
- Administering First Aid
- Self-weight monitoring and instructions on how to
- Referrals to health care providers and/or low cost
- One-on-one information on health insurance, including MediCal and MediCal expansion and referral to local agencies that help with the application process
- Act as first point of medical contact for International Administration of oral and topical over-the-counter medications
- Administration of immunizations of flu shots
- Administration of immunizations for Measles, Mumps, Rubella, Tetanus, Diphtheria, Pertussis, Hepatitis, B and others
- Facilitating monthly gynecological examinations
- Sexually Transmitted Infections testing and education
- Instruction and distribution of contraceptives Providing for anonymous/confidential
- Helping with the costs associated with maintaining our medical record software

...and MORE!

# Who does it affect?

In accordance with Education Code Section 76355 and KCCD Board Policy, all enrolled Bakersfield College students are eligible for the fee, except the following category of students:

- Students who depend exclusively upon prayer for healing in accordance with the teachings of a bona fide religious sect, denomination, or organization;
- Students enrolled in an approved apprenticeship training program;
- Students enrolled only in courses of two weeks or less duration;
- Students who are incarcerated; and
- Students who are primarily attending high school.

# Weighing it out...

## Pro Arguments:

- Provides students the opportunity for affordable health care services
- Could improve student health resulting in increased retention and graduation rates
- Promotes alternative health care service, which can reduce student costs
- It will help students who do not have immediate health care
- Students will be able to use the services while at college towards rural Kern cities mobile devices
- Potential Development of telehealth care on mobile devices
- Increase in mental health professionals to see more students

## Con Arguments:

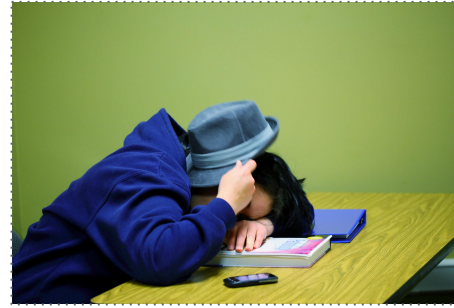
- Some people dislike public health and would not use it.
- Students that do not use the SHWC will still have to pay the fee
- Everyone would pay the fee without an opt-out ability
- Increase in services for our inner-city as well out  
Potential Development of a telehealth care on



# Why ask for the health fee adjustment now?

- SHWC is funded **solely** by the Student Health Fee
- Medical services and personnel costs continue to rise
- The demand for medical and mental health services is increasing
- The Student Health fee has not been raised since 2020
- Our services are **at risk** because of this deficit

# Why we do this...



*Many health, wellness, and social issues negatively impact, delay, or halt California Community College students' academic progress every year.*

*These can be mitigated or eliminated if addressed appropriately, leading to more rapid completion of academic programs and goals.*

**The SHWC  
contributes to  
student success!**

Assessing this fee will allow  
SHWC to continue and  
provide excellent services  
and promote health and  
wellness across the campus  
and remotely for ALL  
Renegades!

---

**Thank you!**

**BAKERSFIELD  
COLLEGE**

---

