



**Assessment
Committee
Roundtable, fall 2019**

**CHDV B42 – Child, Family and
Community – Brenda Nyagwachi**

Student Learning Outcomes



SLO #1- Upon successful completion of the course, the student will be able to analyze the impact of one's own experiences and how they impact relationships with children and families.

SLO #2- Upon successful completion of the course, the student will be able to demonstrate a basic understanding of the social issues, changes, and transitions that affect children, families, schools and communities.

Student Learning Outcomes

- SLO #3- Upon successful completion of the course, the student will be able to demonstrate knowledge of community support services and agencies that serve families.





Plan

- Bronfrenbrenner's Ecological Model Assignment (150 points): SLO# 1, 2 & 3
- Students who plan to work in the community with people from many different economic, social, racial, and ethnic groups should have an understanding of the effects of differing life experiences on attitudes and values of the individual. This report provides a means of demonstrating the purpose of socialization in a way that makes it meaningful.

Plan

- It is useful in helping students to assess his/her own values and attitudes and the effect of the primary socialization agencies on his/her development. In addition, it allows the student to contrast his/her own experience with those of others, and, thereby, better understand the diversity of attitudes and values which exist within a community. The assignment will be graded according to the Signature Portfolio Assignment Rubric for this course. For maximum points, follow the below guidance:



Child, Family and Community / Student Portfolio Assignment:

Assignment Instructions

Proper Header (10 points):
The header for your report should include your name, course number and semester/year.



- The title of your report **Bronfenbrenner's Ecological Model Socialization Report** is to be bolded and underlined either centered at the top of the page or placed at the left margin.

Child, Family and Community / Student Portfolio Assignment:

Assignment
Instructions

Ecological Model Continued



Introduction (10 points):

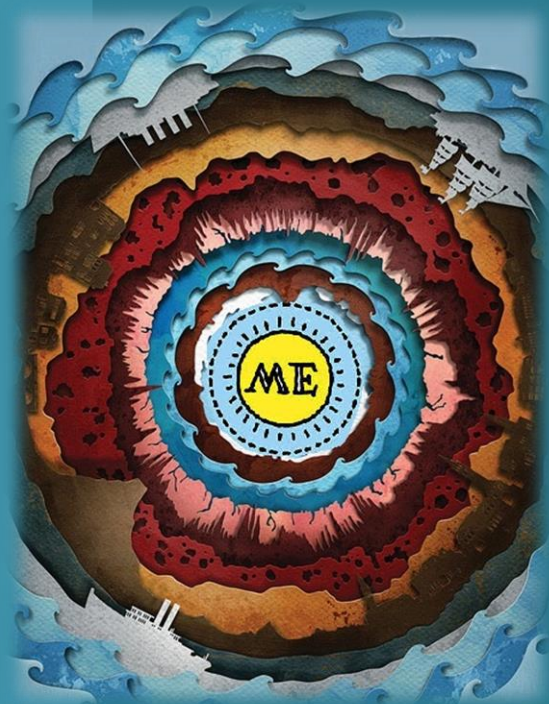
The introduction section of your report should include background knowledge of Bronfenbrenner's ecological model systems *and* an overview of how Bronfenbrenner's theory applies to your own life.





The intention of the assignment is to attempt to determine how you as the child at the center were affected by the primary agencies of socialization such as the family, school, religious or other organizations, peer groups, the media of mass communication, and the broader community, as well as laws, culture and customs in relation to Bronfenbrenner's ecological model systems.

Assignment
Instructions
(continued)



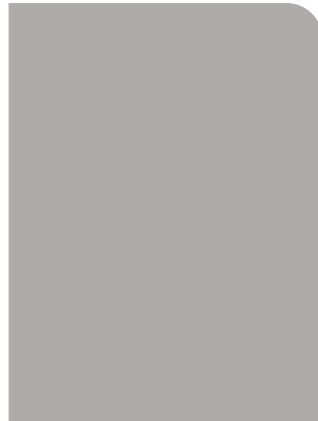
- Define each system using your own word. Bold each system title # 1-4. Throughout the ecological model systems, consider some of the following experiences as appropriate and add to these as you see fit.
- The included socializing agents covered within your report should be specific to your own experiences. How they are addressed will depend on how you were affected by them. **(10 points A-I)**



Assignment Instructions (continued)

A) **Family type** – What type of family did you grow up in? nuclear, extended, single parent, blended, etc. What were the effects of your family type(s)?

B) **Family Dynamics** – How did the following dynamics affect your development? culture; independent or interdependent attitudes; parenting styles; brothers and sisters; your position in the family; your attachments (parents, grandparents, siblings); family occupation; experiences; temperaments and perceptions, or feelings including trust, autonomy, initiative, and self-esteem.



Assignment Instructions (continued)

- C) **The community** size, location, economy, attitudes, special people in the neighborhood or community, and your connections to your community – How did these affect you?
- D) **School size** and type, teacher(s) who influenced you positively and/or negatively, your attitudes – How did these have an effect on you?



E) **Religious** organizations – denomination, activities, attitudes, your relationships and experiences – What were their effect on you?

F) **Peer groups** – Where did you meet your friends? Who were they? What did you learn from your peer group? What did you teach them?

G) **Other organizations**, formal and informal – these might be organizations such as Scouts, Campfire, 4-H, teams, gangs, hospitals, political organizations in which you have worked – How did these have an effect on you?



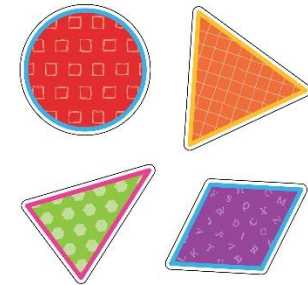
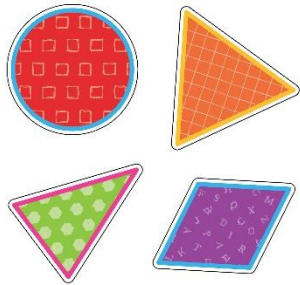


H) **Media** – Which books, television shows, movies, videos may have influenced you? How did they influence you?

I) **Other** – work, sports, special skills, volunteer work, relationships, marriage, children, and any experience or events which strongly influenced you. Explain their effects on you.



Conclusion (10 points): The conclusion section of your report should include your own insights on how Bronfenbrenner's ecological model systems have affected your own social development bringing you to where you are now in life. Include your future goals and how Bronfenbrenner's ecological model systems might influence your understanding of others. Explain how this journey of looking at your own socialization will affect your ability to relate to others.



Formatting and Layout (40 points): The layout of your report is to be typed using Times New Roman 12-point font, with one-inch margins, and double-spaced. For maximum points, your paper should be 5 pages in length, contain all four systems, and typographical and grammatical errors should be kept to a minimum.



Child, Family and Community /
Student Portfolio Assignment:

CHDVB42 Written Signature Portfolio Assignment Grading Rubrics

The written interpretation of all the systems applying the Bronfenbrenner model to your life can be done both in written format and pictorially. (Note: Photos for this project may be maintained for the portfolio entry if desired.)



CHDV42 Written Signature Portfolio Assignment Grading Rubrics



A

- Times New Roman (12) font; 1- inch margins, double-spaced
- 0-3 grammatical/spelling errors
- 5 pages in length
- 4 Systems of the Model addressed
- Contains intro and conclusion
- Addresses 4 Systems' influences

B

- Times New Roman (12) font; 1- inch margins, double-spaced
- 5-10 grammatical/spelling errors
- 4 pages in length
- 3 Systems of the Model addressed
- Contains intro and conclusion
- Addresses 3 Systems' influences



CHDVB42 Written Signature Portfolio Assignment Grading Rubrics

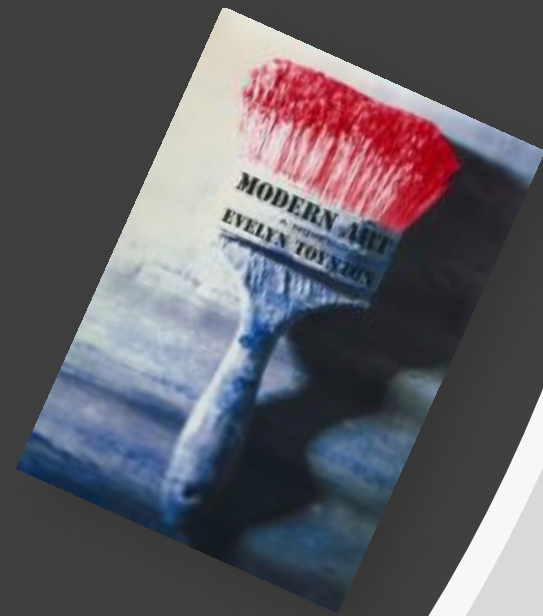
- C**
- Times New Roman (12) font; 1-inch margins, double-spaced
 - 11-15 grammatical/spelling errors
 - 3 pages in length
 - 2 Systems of the Model addressed
 - Contains intro and conclusion
 - Addresses 2 Systems' influences
- D**
- Times New Roman (12) font; 1-inch margins, double-spaced
 - 16-20 grammatical/spelling errors
 - 2 pages in length
 - 1 System of the Model addressed
 - Contains intro and conclusion
 - Addresses 1 System's influences

CHDVB42 Written Signature Portfolio Assignment Grading Rubrics

- F
 - Times New Roman (12) font;
1 inch margins, double-spaced
 - 21 and over
grammatical/spelling errors
 - (0) pages in length
 - (0) System's Model
addressed
 - Does not contain intro and
conclusion
 - Does not address Systems'
influences



Refine



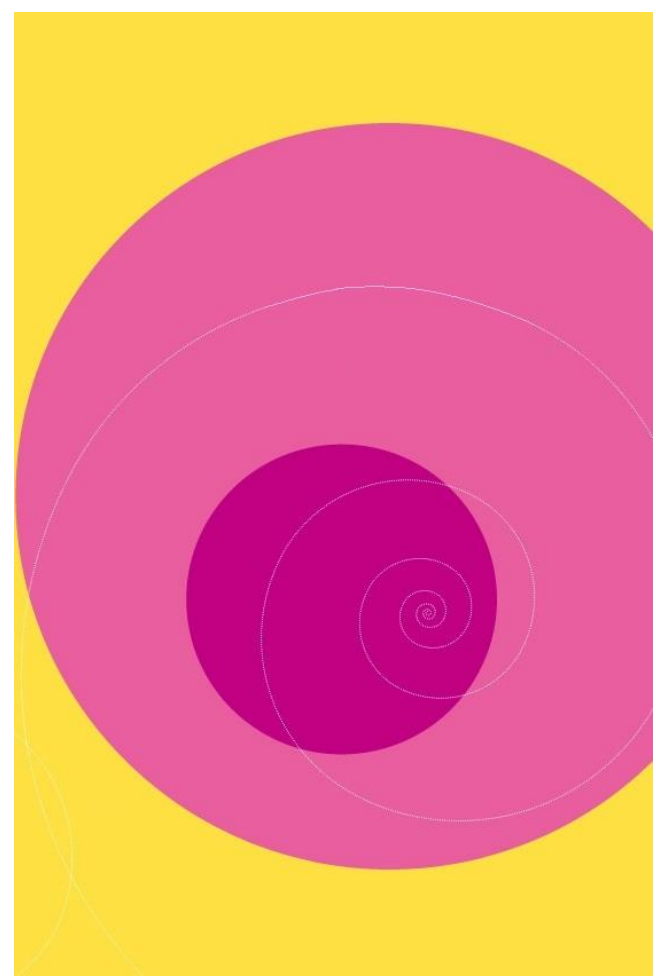
- Use student support system STARFISH
- Emphasize that students make appointments with the BC Learning Center for writing/grammar workshops on a regular basis for assistance.
- Emphasize that students participate in Library Workshops on how to research materials, etc.
- Make sure there are more books for the courses I teach in the library for student use.



Determine if enough tutors are available for students.

Reminders on CANVAS and FTF of upcoming assignments.

Explain the particulars of main assignments several times throughout the semester.



Spring 2018

- Must pass paper with a 70% or better
- 90 % of students passed the portfolio assignment with a grade of "C" or better.

