

Kern Community College District has been in the top 5 statewide for the percentage amount of its reserve for the past 8 years  
 KCCD highlighted in yellow. Community college districts with more than 10,000 FTES highlighted in green.

	2011-12	2012-13	2013-14	2014-15	2015-16	2016-17	2017-18	2018-19	2019-20	2020-21
#1	SAN BERNARDINO	SAN BERNARDINO	BARSTOW	LASSEN	WEST VALLEY	WEST VALLEY	WEST VALLEY	PALO VERDE	KERN	FEATHER RIVER
#2	RANCHO SANTIAGO	SANTA BARBARA	SANTA BARBARA	WEST VALLEY	KERN	KERN	KERN	VENTURA	FEATHER RIVER	KERN
#3	VICTOR VALLEY	FOOTHILL-DEANZA	FEATHER RIVER	SANTA BARBARA	FEATHER RIVER	LASSEN	FEATHER RIVER	WEST VALLEY	WEST HILLS	MT. SAN JACINTO
#4	SANTA BARBARA	FEATHER RIVER	KERN	KERN	VENTURA	BUTTE	VENTURA	FEATHER RIVER	MT. SAN JACINTO	WEST HILLS
#5	NORTH ORANGE	LASSEN	LASSEN	FOOTHILL-DEANZA	LASSEN	BARSTOW	NORTH ORANGE	KERN	WEST VALLEY	WEST KERN

Data =

California Community Colleges Summary of Unrestricted General Fund Transactions

Table III.2 of the CCFS-311 Reports at

<https://misweb.cccco.edu/fiscalportal/reports.aspx>

Net Ending Balance / Expenditures (last column in the Table III.2)

FTES data from [https://datamart.cccco.edu/Students/FTES\\_Summary.aspx](https://datamart.cccco.edu/Students/FTES_Summary.aspx)

# KCCD vs. other 71 college districts in CA

Net Ending Balance/Expenditures

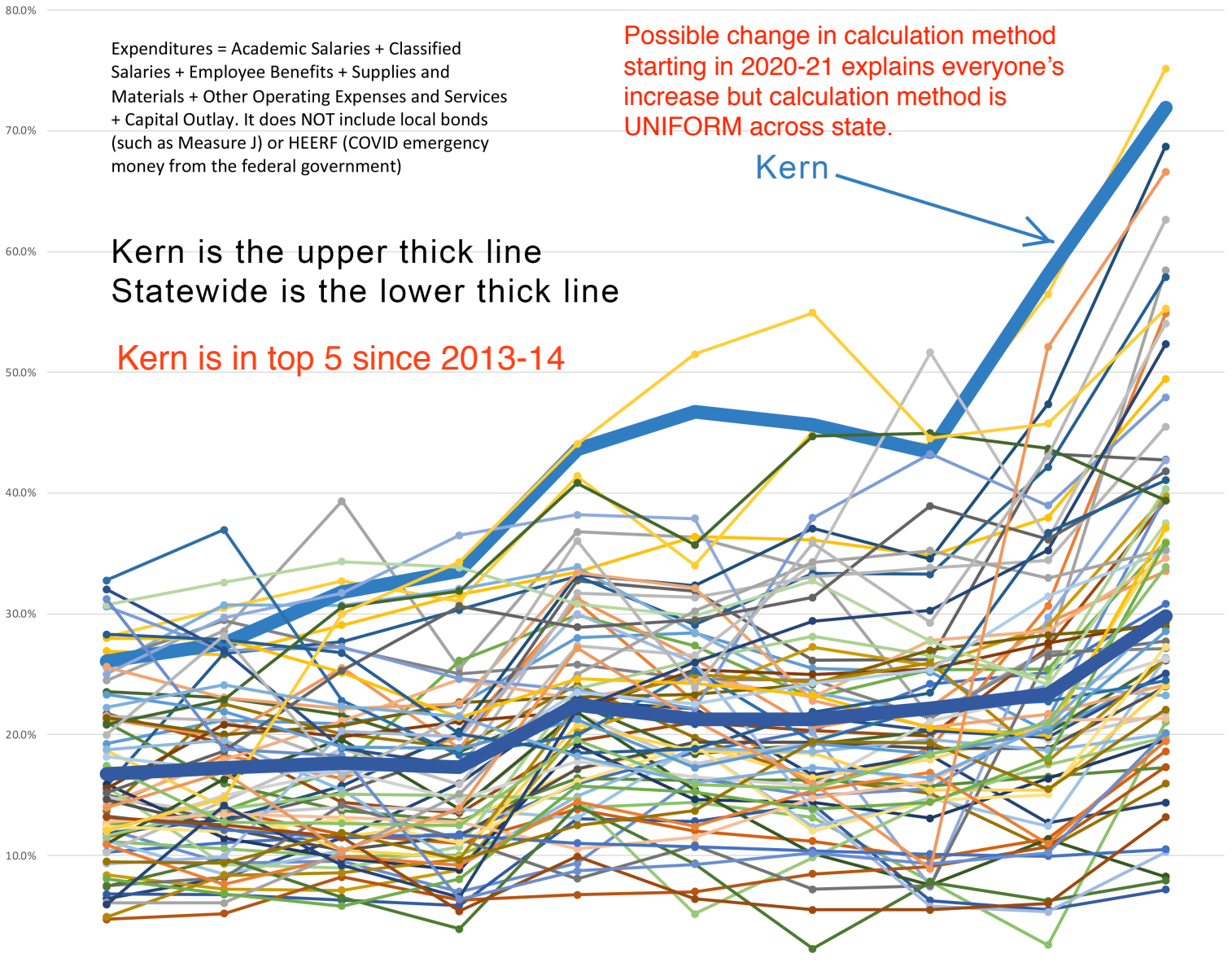
Expenditures = Academic Salaries + Classified Salaries + Employee Benefits + Supplies and Materials + Other Operating Expenses and Services + Capital Outlay. It does NOT include local bonds (such as Measure J) or HEERF (COVID emergency money from the federal government)

Possible change in calculation method starting in 2020-21 explains everyone's increase but calculation method is UNIFORM across state.

Kern

Kern is the upper thick line  
Statewide is the lower thick line

Kern is in top 5 since 2013-14



- ALLAN HANCOCK
- ANTELOPE VALLEY
- BARSTOW
- BUTTE
- CABRILLO
- CERRITOS
- CHABOT-LAS POSITAS
- CHAFFEY
- CITRUS
- COAST
- COMPTON
- CONTRA COSTA
- COPPER MOUNTAIN
- DESERT
- EL CAMINO
- FEATHER RIVER
- FOOTHILL-DEANZA
- GAVILAN JOINT
- GLENDALE
- GROSSMONT-CUYAMACA
- HARTNELL
- IMPERIAL
- LOS ANGELES
- LOS RIOS
- MARIN
- LAKE TAHOE
- LASSEN
- LONG BEACH
- LOS ANGELES
- LOS ANGELES
- MENDOCINO-LAKE
- MERCED
- MIRACOSTA
- MONTEREY
- MT. SAN ANTONIO
- MT. SAN JACINTO
- NAPA
- NORTH ORANGE
- OHLONE
- PALO VERDE
- PALOMAR
- PASADENA
- PERALTA
- RANCHO SANTIAGO
- REDWOODS
- RIO HONDO
- RIVERSIDE
- SAN BERNARDINO
- SAN DIEGO
- SAN FRANCISCO
- SAN JOAQUIN DELTA
- SAN JOSE-EVERGREEN
- SAN LUIS OBISPO
- SAN MATEO
- SANTA BARBARA
- SANTA CLARITA
- SANTA MONICA
- SEQUOIAS
- SHASTA-TEH-TRI
- SIERRA
- SIS KUYOU
- SOLANO
- SONOMA
- SOUTH ORANGE
- SOUTHWESTERN
- STATE CENTER
- VENTURA
- VICTOR VALLEY
- WEST HILLS
- WEST KERN
- WEST VALLEY
- YOSEMITE
- YUBA
- Statewide